





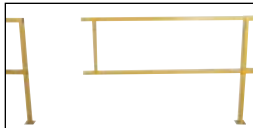
WIRE MESH FOR HANDRAIL series WM



CONNECTION TUBING series CSEC



PLASTIC BUMPER model M-BUMP



60" SLIDING GATE model S-GATE-60



CORNER CONNECTORS model C-CON



CONCRETE ANCHOR BOLTS model VDKR-KIT

## Steel Square Safety Handrails

An economical way to protect people and machinery. Applications include loading docks, floor openings, walkways, and mezzanines. Highly visible safety yellow powder coat finish. Available with or without toeboards as application requires.

MODEL NUMBER	SQUARE TUBE (O.D.)	OVERALL HEIGHT	MID-RAIL HEIGHT	LENGTH	NET WT. (POUNDS)	LIST PRICE EACH
<b>RIGID SECTION WITH TOEBOARD</b>						
SQ-48-TB	1-5/8"	42"	21"	48"	59	\$128.00
SQ-60-TB	1-5/8"	42"	21"	60"	64	162.00
SQ-72-TB	1-5/8"	42"	21"	72"	67	179.00
SQ-84-TB	1-5/8"	42"	21"	84"	72	212.00
SQ-96-TB	1-5/8"	42"	21"	96"	76	238.00
SQ-108-TB	1-5/8"	42"	21"	108"	80	272.00
SQ-120-TB	1-5/8"	42"	21"	120"	84	297.00
<b>RIGID SECTION WITHOUT TOEBOARD</b>						
SQ-48	1-5/8"	42"	21"	48"	42	\$107.00
SQ-60	1-5/8"	42"	21"	60"	48	129.00
SQ-72	1-5/8"	42"	21"	72"	50	146.00
SQ-84	1-5/8"	42"	21"	84"	55	174.00
SQ-96	1-5/8"	42"	21"	96"	60	193.00
SQ-108	1-5/8"	42"	21"	108"	66	226.00
SQ-120	1-5/8"	42"	21"	120"	70	246.00
<b>OPTIONAL WIRE MESH</b>						
WM-48	--	22"	--	48"	18	\$38.00
WM-60	--	22"	--	60"	25	42.00
WM-72	--	22"	--	72"	28	44.00
WM-84	--	22"	--	84"	32	50.00
WM-96	--	22"	--	96"	36	56.00
WM-108	--	22"	--	108"	41	62.00
WM-120	--	22"	--	120"	43	66.00
<b>OPTIONAL CONNECTION TUBING (†)</b>						
CSEC-48	1-5/8"	--	--	48"	14/PR.	\$64.00
CSEC-60	1-5/8"	--	--	60"	16/PR.	70.00
CSEC-72	1-5/8"	--	--	72"	18/PR.	74.00
CSEC-84	1-5/8"	--	--	84"	20/PR.	80.00
CSEC-96	1-5/8"	--	--	96"	22/PR.	82.00
CSEC-108	1-5/8"	--	--	108"	24/PR.	103.00
CSEC-120	1-5/8"	--	--	120"	25/PR.	122.00
<b>OPTIONAL 4" HIGH TOEBOARD</b>						
TOE-B-48	--	4"	--	43½"	17	\$24.00
TOE-B-60	--	4"	--	55½"	21	29.00
TOE-B-72	--	4"	--	67½"	25	32.00
TOE-B-84	--	4"	--	79½"	30	38.00
TOE-B-96	--	4"	--	91½"	34	40.00
TOE-B-108	--	4"	--	99"	36	56.00
TOE-B-120*	--	4"	--	111"	42	55.00
<b>OPTIONS</b>						
C-CON	CORNER CONNECTORS				10	\$38.00
S-GATE-60	60" SLIDING GATE				22	117.00
M-BUMP	72"L x 10"H BUMPER (HARDWARE INCLUDED)				43	102.00
VDKR-KIT	CONCRETE ANCHOR BOLTS (4) 3/8" x 3"				4	7.00

(†) CONNECTION TUBING IS PRICED & SOLD IN PAIRS

DC-20/UPS/FC-50+

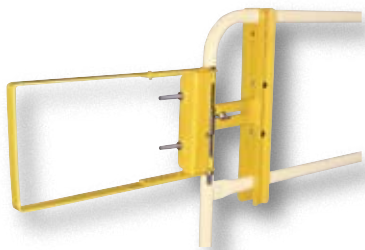
\*RECEIVE (2) PIECES 55½" LONG EACH

## Self-Closing Steel Gates

Customize your safety railings with Self-Closing Steel Gates. Gates can be mounted from the left or right with the included mounting hardware. Mount to horizontal rails that measure up to 2" diameter and are spaced 10" to 21" apart center to center. Choose from galvanized or yellow powder coat finish. Meets OSHA 1910.23a requirements. (Railing and base not included.)

MODEL NUMBER	MATERIAL	OPENING WIDTH	HEIGHT	NET WT. (POUNDS)	LIST PRICE EACH
SPG-26-Y	YELLOW	16" to 26"	12"	30	\$224.00
SPG-26-G	GALVANIZED	16" to 26"	12"	30	196.00
SPG-40-Y	YELLOW	24" to 40"	12"	35	\$235.00
SPG-40-G	GALVANIZED	24" to 40"	12"	35	211.00

DC-25/FC-50



## Guard Rail Systems

Protect personnel and equipment both visually and physically with our Guard Rail Systems. These economical systems can be utilized indoors or outdoors. Ideal for protecting corners of buildings and machinery from fork truck and vehicle damage. Choose between one, two, or three high rail systems. Tubular posts are machined for continuous or perpendicular rail mounting. US D.O.T. guard rail mounting and I-beam posts available, contact factory. Rail mounting hardware included with post. Floor mounting kit sold separately. Deduct 5" when overlapping on a shared post.

MODEL NUMBER	HEIGHT	LENGTH	MOUNTING POSTS REQUIRED	RADIUS	NET WT. (POUNDS)	LIST PRICE EACH
<b>GALVANIZED GUARD RAIL - STRAIGHT RAILS</b>						
GR-4	12"	48"	2	--	44	\$53.00
GR-6	12"	72"	2	--	66	80.00
GR-8	12"	96"	2	--	89	111.00
GR-10	12"	120"	3	--	112	137.00
GR-12	12"	144"	3	--	133	145.00
<b>POWDER COAT GUARD RAIL - STRAIGHT RAILS</b>						
GR-4-PC-YEL	12"	48"	2	--	44	\$65.00
GR-6-PC-YEL	12"	72"	2	--	66	100.00
GR-8-PC-YEL	12"	96"	2	--	89	139.00
GR-10-PC-YEL	12"	120"	3	--	112	171.00
GR-12-PC-YEL	12"	144"	3	--	133	181.00
<b>GALVANIZED GUARD RAIL - CURVED RAILS 90°</b>						
GR-4-CRV	12"	48"	2	30½"	44	\$190.00
GR-6-CRV	12"	72"	2	46"	66	216.00
GR-10-CRV	12"	120"	3	75½"	112	273.00
GR-12-CRV	12"	144"	3	91½"	133	281.00

DC-20/FC-50

<b>GUARD RAIL OPTIONS</b>					
MODEL NUMBER	DESCRIPTION	GUARD RAIL LEVELS	NET WT. (LBS.)	LIST PRICE EACH	
GR-SP	SPRING POST - 24" HIGH	ONE	21	\$86.00	
GR-TP18	TUBULAR POST - 18" HIGH (10" x 10" base plate)	ONE	41	81.00	
GR-TP42	TUBULAR POST - 42" HIGH (10" x 10" base plate)	TWO	60	95.00	
GR-TP60	TUBULAR POST - 60" HIGH (10" x 10" base plate)	THREE	89	112.00	
GR-TP72	TUBULAR POST - 72" HIGH (10" x 10" base plate)	THREE	109	130.00	
<b>TUBULAR POSTS FOR DROP IN DESIGN</b>					
GR-TP18-DI	18" HIGH POST (10" x 10" base plate)	ONE	46	\$98.00	
GR-TP42-DI	42" HIGH POST (10" x 10" base plate)	TWO	65	131.00	
GR-TP60-DI	60" HIGH POST (10" x 10" base plate)	THREE	94	167.00	
GR-TP72-DI	72" HIGH POST (10" x 10" base plate)	THREE	114	202.00	
GR-BKT-DI	EXTRA POST MOUNTING BRACKET		5	26.00	
GR-CAP	PLASTIC END CAP 7"W x 13½"H x 4"D (Adds 3" to Length)		7	\$36.00	
GR-BG	BUFFER END GUARD 48"L x 16"H x 12½"D (Adds 28" to Length)		40	54.00	
GR-TG	FLARED END GUARD 27"L x 18"H x 10"D (Adds 18" to Length)		30	63.00	
GR-ABK	CONCRETE ANCHOR BOLTS (4) 3/4" x 4"		2	12.00	
GR-SPP	SPRING POST MOUNT PLATE FOR ASPHALT/BLACKTOP APPLICATIONS		3	14.00	

DC-20/FC-50

## Structural Guard Rail Systems

Constructed of structural C-channel 11.5 lbs. per foot for maximum strength and protection. Railing can be removed in a matter of seconds. Features 10" x 10" base plate with (4) pre-drilled mounting holes. Available in custom lengths.

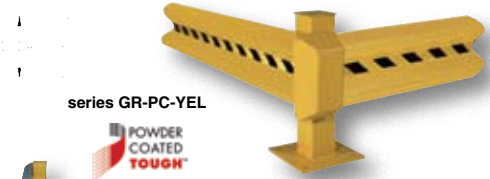
MODEL NUMBER	HEIGHT	LENGTH	NET WT. (POUNDS)	LIST PRICE EACH
<b>STRUCTURAL GUARD RAIL</b>				
ST-GR-4	8"	48"	46	\$50.00
ST-GR-6	8"	72"	69	80.00
ST-GR-8	8"	96"	92	114.00
ST-GR-10	8"	120"	115	143.00
ST-GR-12	8"	144"	138	151.00
<b>TUBULAR MOUNTING POSTS WITH DROP-IN STYLE BRACKET</b>				
STGR-TP-18DI	18" HIGH POST (ACCOMMODATES 1 RAIL)		47	\$104.00
STGR-TP-42DI	42" HIGH POST (ACCOMMODATES 2 RAIL)		67	139.00
STGR-TP-60DI	60" HIGH POST (ACCOMMODATES 3 RAIL)		95	177.00
STGR-TP-72DI	72" HIGH POST (ACCOMMODATES 3 RAIL)		116	214.00
STGR-BKT-DI	EXTRA POST MOUNTING BRACKET		5	28.00

DC-20/FC-50



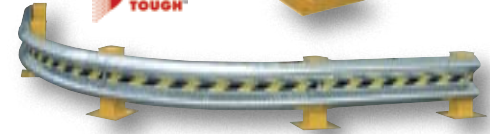
series GR

48 Hours  
to Ship



series GR-PC-YEL

POWDER COATED TOUGH



series GR-CRV



TUBULAR POST series GR-TP



Shown with Galvanized Guard Rail and Plastic End Caps  
SPRING POST model GR-SP



Shown with Galvanized Guard Rail  
DROP-IN STYLE POSTS series GR-TP-DI



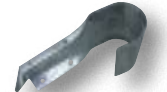
PLASTIC END CAP model GR-CAP



CONCRETE MOUNTING KIT model GR-ABK



FLARED END GUARD model GR-TG

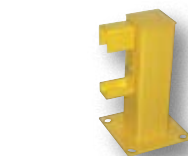


BUFFER END GUARD model GR-BG

The above two End Guards can either be welded or bolted onto our Galvanized Guard Rail. Hardware not included.



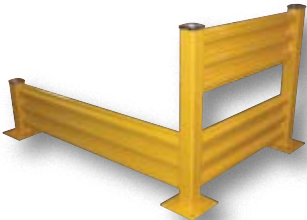
STRUCTURAL GUARD RAIL series ST-GR



STRUCTURAL GUARD POSTS AND BRACKETS series STGR-TP-DI



**DROP-IN STYLE**  
model (2) YGR-LO-4  
model (2) YGR-TP42-S



**BOLT-ON STYLE**  
model (2) YGR-LO-4, (1) YGR-TP42-S,  
(1) YGR-TP42-C, (1) YGR-LO-6,  
(1) YGR-TP18-S



series YGR-TP

## Structural Guard Rail - drop-in and bolt-on style

Create a modular system to protect equipment, inventory, and individuals from damage or injury with this highly visible powder coat yellow Structural Guard Rail. Triple ridge corrugated rails are constructed from 1/8" thick material, made for high impact resistance indoors or out. Posts are constructed of round corner 1/4" thick material. The steel base plate measures 10" square and is 5/8" thick. Bolts, anchors, washers, and nuts are provided with individual post sections. Concrete mounting kit is available separately.

Provide a strong barrier with easy accessibility with our Drop-In Style rails. Slide rail sections into post saddles for simple assembly. Each Drop-In Style rail section includes two brackets. Bolt-On Style rails are designed for permanent installation.

MODEL NUMBER	HEIGHT	LENGTH	MOUNTING POSTS REQUIRED	NET WT. (POUNDS)	LIST PRICE EACH
<b>STRUCTURAL GUARD RAIL SECTION - DROP-IN STYLE (2 BRACKETS INCLUDED PER RAIL)</b>					
YGR-LO-4	14½"	48"	2	54	\$102.00
YGR-LO-6	14½"	72"	2	74	126.00
YGR-LO-8	14½"	96"	2	94	150.00
YGR-LO-10	14½"	120"	3	114	175.00
<b>STRUCTURAL GUARD RAIL SECTION - BOLT-ON STYLE</b>					
YGR-B-4	14½"	48"	2	4	\$87.00
YGR-B-6	14½"	72"	2	64	111.00
YGR-B-8	14½"	96"	2	84	135.00
YGR-B-10	14½"	120"	3	104	159.00
YGR-TP18-S	18"	RIGID CENTER POST		40	\$78.00
YGR-TP42-S	42"	RIGID CENTER POST		65	110.00
YGR-TP18-C	18"	RIGID CORNER POST		40	78.00
YGR-TP42-C	42"	RIGID CORNER POST		65	110.00
YGR-ABK-4	Concrete Mounting Kit, (4) Lag Bolts			4	\$11.00

DC-20/FC-50



model WEB-P-GL



model WEB-P



## Indoor Personnel Guidance Barriers

Keep lines flowing smoothly with economical personnel guidance barriers. Perfect for restaurants, offices, hospitals, schools, and banks. Ideal for indoor applications. Series WEB are not interchangeable with series TSB and TSBO.

**Floor Mounted Barrier, model WEB-P-GL** includes black fabric web with a white stripe. The self-retracting web extends up to 72". Web end will attach to another barrier.

**Wall Mounted Barrier, model WEB-W** includes black fabric web with white stripe. The self-retracting web extends up to 72". Web end will attach to wall-mounted receiver or another floor-mounted barrier.

**Classic Tensabarrier® Web Barrier** is seen around the world in various businesses and airports. Many belt colors and designs available.



**WALL MOUNTED BARRIER**  
model WEB-W



**METAL BASE**  
series TSB-7M

**BASIC BASE**  
series TSB-7B



MODEL NUMBER	DESCRIPTION	NET WT. (POUNDS)	LIST PRICE EACH
WEB-P-GL	40"H POST W/WEB & SELF-REELING TOP (GOLD)	42	\$170.00
WEB-P	40"H POST W/WEB & SELF-REELING TOP (BLACK)	42	70.00
WEB-W	WALL MOUNT UNIT WITH RECEPTACLE	6	69.00
TSB-7M	13½"D METAL BASE - 7'6"L x 40"H	26	\$198.00
TSB-13M	13½"D METAL BASE - 13'L x 40"H	26	273.00
TSB-NBM	13½"D METAL BASE - NO BELT/ 40" POST ONLY	26	164.00
TSB-7B	13½"D BASIC BASE - 7'6"L x 40"H	26	\$186.00
TSB-13B	13½"D BASIC BASE - 13'L x 40"H	26	261.00
TSB-NBB	13½"D BASIC BASE - NO BELT/ 40" POST ONLY	26	152.00

DC-20/UPS (4 UNITS OR LESS)/FC-150

## Plastic Chain Barricades

Portable and lightweight units are easy to position where needed most. Choose either floor-mount or ground-stake design depending on application. Chain simply snaps onto post hooks (two hooks per post). Three standard colors to choose from: white, yellow and black. Units are easy to assemble with snap-together parts. Posts are sold four (4) to a box. Chains sold in rolls.



**FLOOR MOUNTED POST**  
model PCB-W-F

**GROUND STAKE POST**  
model PCB-W-G



MODEL NUMBER	DESCRIPTION	COLOR	DIAMETER	HEIGHT	NET WT. (LBS.)	LIST PRICE EACH
PCB-W-F	FLOOR MT'D POST	WHITE	2½"	38½"	32	\$91.00
PCB-Y-F	FLOOR MT'D POST	YELLOW	2½"	38½"	32	91.00
PCB-B-F	FLOOR MT'D POST	BLACK	2½"	38½"	32	91.00
PCB-W-G	GROUND STAKE POST	WHITE	2½"	35"	28	\$96.00
PCB-Y-G	GROUND STAKE POST	YELLOW	2½"	35"	28	96.00
PCB-B-G	GROUND STAKE POST	BLACK	2½"	35"	28	96.00
PCB-W-CN	CHAIN	WHITE	2" x 50 ft.	--	10	\$32.00
PCB-Y-CN	CHAIN	YELLOW	2" x 50 ft.	--	10	32.00
PCB-B-CN	CHAIN	BLACK	2" x 50 ft.	--	10	32.00

DC-20/UPS/FC-150