



Shown with Optional Aluminum Bridge

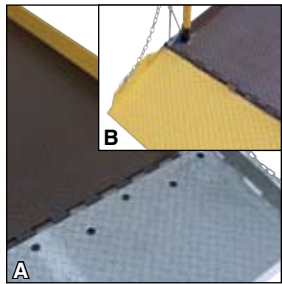


DVD or VIDEO AVAILABLE

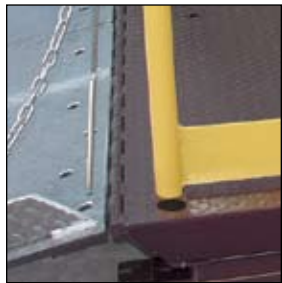
Premium Truck Scissor Dock Lifts

Save time and reduce man-hours where there are no docks. Pit or surface mount with the optional approach ramp. Engineered and designed for maximum safety and efficiency. Checkered plate deck is made of heavy gauge steel for years of use. Hydraulic cylinders feature emergency velocity fuse if line breaks. Complete with upper travel limit switch and overload relief valve. Push-button control is 24V AC on a 20 foot long coil cord. Prewired control box includes magnetic starter and overload fuse. High visibility removable handrails with fixed toeboards are standard. Includes beveled toe-guards and electric toe-guards around perimeter of platform. External 6.5 HP 208-230/460V, 3-phase, 60 Hz motor may be located up to 8 feet away from lift (weighs 220 pounds). OSHA and ANSI compliant.

OPTIONS



A) ALUMINUM BRIDGE • WL-SATB
B) STEEL BRIDGE • WL-SSTB



REMOVABLE HANDRAILING AND TOEBOARDS model WL-RHT



STOP SIGNAL SIGN model WL-SSS



GALVANIZED FRAME AND DECK model SPO-WL-LS-ZRC

LOADING DOCK EQUIPMENT

MODEL NUMBER	PLATFORM SIZE (W x L)	LOWERED HEIGHT	RAISED HEIGHT	CAPACITY (POUNDS)	OVERALL FRAME SIZE (W x L)	NET WT. (POUNDS)	LIST PRICE EACH
WL-100-5-48	48" x 96"	8"	68"	5,000	41" x 93"	3125	
WL-100-5-68	72" x 96"	8"	68"	5,000	62" x 93"	3485	
WL-100-5-78	84" x 96"	8"	68"	5,000	62" x 93"	3706	
WL-100-5-88	96" x 96"	8"	68"	5,000	86" x 93"	3952	
WL-100-5-610	72" x 120"	8"	68"	5,000	62" x 93"	3823	
WL-100-5-710	84" x 120"	8"	68"	5,000	62" x 93"	4027	
WL-100-5-810	96" x 120"	8"	68"	5,000	86" x 93"	4107	
WL-100-6-68	72" x 96"	10"	70"	6,000	62" x 93"	3648	
WL-100-6-78	84" x 96"	10"	70"	6,000	62" x 93"	3788	
WL-100-6-88	96" x 96"	10"	70"	6,000	86" x 93"	4167	
WL-100-6-610	72" x 120"	10"	70"	6,000	62" x 93"	3939	
WL-100-6-710	84" x 120"	10"	70"	6,000	62" x 93"	4038	
WL-100-6-810	96" x 120"	10"	70"	6,000	86" x 93"	4301	
WL-100-8-68	72" x 96"	10"	70"	8,000	62" x 93"	4396	
WL-100-8-78	84" x 96"	10"	70"	8,000	62" x 93"	4592	
WL-100-8-88	96" x 96"	10"	70"	8,000	86" x 93"	4698	
WL-100-8-610	72" x 120"	10"	70"	8,000	62" x 118"	4807	
WL-100-8-710	84" x 120"	10"	70"	8,000	62" x 118"	4913	
WL-100-8-810	96" x 120"	10"	70"	8,000	86" x 118"	5157	
WL-100-10-68	72" x 96"	14"	72"	10,000	62" x 93"	5804	
WL-100-10-78	84" x 96"	14"	72"	10,000	62" x 93"	5991	
WL-100-10-88	96" x 96"	14"	72"	10,000	86" x 93"	6177	
WL-100-10-610	72" x 120"	14"	72"	10,000	62" x 118"	6037	
WL-100-10-710	84" x 120"	14"	72"	10,000	62" x 118"	6224	
WL-100-10-810	96" x 120"	14"	72"	10,000	86" x 118"	6410	
WL-100-10-612	72" x 144"	14"	72"	10,000	62" x 118"	6504	
WL-100-10-712	84" x 144"	14"	72"	10,000	62" x 118"	6690	
WL-100-10-812	96" x 144"	14"	72"	10,000	86" x 118"	6876	
WL-100-12-68	72" x 96"	14"	72"	12,000	62" x 93"	6387	
WL-100-12-78	84" x 96"	14"	72"	12,000	62" x 93"	6573	
WL-100-12-88	96" x 96"	14"	72"	12,000	86" x 93"	6731	
WL-100-12-610	72" x 120"	14"	72"	12,000	62" x 118"	6620	
WL-100-12-710	84" x 120"	14"	72"	12,000	62" x 118"	6807	
WL-100-12-810	96" x 120"	14"	72"	12,000	86" x 118"	6993	
WL-100-12-612	72" x 144"	14"	72"	12,000	62" x 118"	7098	
WL-100-12-712	84" x 144"	14"	72"	12,000	62" x 118"	7225	
WL-100-12-812	96" x 144"	14"	72"	12,000	86" x 118"	7436	

DC-20/FC-70+

Premium Truck Scissor Dock Lift Options

SPLIT ALUMINUM TRUCK BRIDGE: Standard steel bridge can be replaced with an aluminum bridge 72" wide x 18" long. Ideal for government applications. Good for 5 & 6K. (38 lbs.) **Model WL-SATB.**

SPLIT STEEL BRIDGE: An additional split steel bridge can be added to opposite side of unit. 72" wide x 18" long. (120 lbs.) **Model WL-SSTB.**

REMOVABLE HANDRAILS/TOEBOARDS: When mounting this lift in a pit, this option allows platform to be flush with the floor for fork truck cross traffic. Deduct 7½" from overall width for usable width. **Model WL-RHT.**

WARNING BEEPER & STROBE: Sounds and flashes during lifting and lowering operations. 80 decibels. **Model WL-WB.**

ADDITIONAL HYDRAULIC LINE: To order, tag model number with suffix WL-HH-(the amount of line needed in feet). **Model WL-HH.** (8 foot hose standard)

APPROACH RAMP FOR 8" LOWERED HEIGHT LIFTS: 60" wide x 65" long. 7° ramp angle. 308 lbs. **Model WL-AR8.**

APPROACH RAMP FOR 10" LOWERED HEIGHT: 60" wide x 82" long. 7° ramp angle. 395 lbs. **Model WL-AR10.**

APPROACH RAMP FOR 12" LOWERED HEIGHT: 60" wide x 98" long. 7° ramp angle. 474 lbs. **Model WL-AR12.**

****APPROACH RAMPS MUST BE ANCHORED TO THE FLOOR****

Premium Truck Scissor Dock Lift Options

50,000 lbs. ROLLOVER CAPACITY (25,000 lbs. per axle): Add'l structural channel and supports for deck. Increases lowered height 2". **Model WL-50.**

MOBILE WHEEL KIT: Kit may be used on the 5,000 and 6,000 lbs. capacity units only. System includes a dolly jack. **Model WL-WK.**

SAFETY ACCORDION SKIRTS: Keep people and debris from getting under lift. We recommend customer installed skirts to avoid freight damage.

Model WL-ASC.

Model WL-ASF.

SPECIAL RESERVOIR MOUNTING: Choose either wall mount or handrail mount (now removable).

Model WL-RMB.

AUTOMATIC WHEEL CHOCKS: As the unit lifts, this option will block dock end of ramp to avoid roll off. System requires a special pit mount. **Model WL-AWC.**

STOP SIGNAL SIGN: As the truck approaches the lift, the sign raises to let the driver know when to stop for safe loading/unloading.

Model WL-SSS.

KEY LOCK OPERATION: To avoid unauthorized use of the lift, this option will lock out the controls. **Model WL-KL.**

TWO SPEED PUMP: Increase lifting speed by 55% when lift is unloaded. Ideal for unloading applications. **Model WL-TSP.**

2 HP SINGLE OR THREE PHASE ELECTRIC MOTOR: Consult factory for lift speeds. Both internal and external power units available. 10" minimum lowered height. **Model WL-2HP.**

3 HP SINGLE PHASE ELECTRIC MOTOR: Replace standard three phase power unit with 208/230V, 1 phase, 60Hz power unit (1½ gallons per minute pump speed). **Model WL-3HP.**

7-1/2 HP POWER UNIT: Power unit is wired for three phase 208-230/460V 60Hz, unit will pump 6 gallons per minute. **Model WL-7HP.**

10 HP POWER UNIT: Power unit is wired for three phase 208-230/460V 60Hz, unit will pump 8 gallons per minute. **Model WL-10HP.**

GALVANIZED COATING: Cold galvanized coating designed for wash-down applications and wet environments.

Model SPO-WL-LS-ZRC.

STEEL-IT™ COATING: Designed for incidental food contact and wash-down environments. FDA approved.

Model SPO-WL-LS-SSC.

OIL HEATER: For cold weather applications. Unit supplied with thermostat for automatic heat control. 208-230V single or three phase power. 350 watts. **Model WL-H2.**

OIL HEATER: Same as above; to be used with 460V three phase power unit, 0.75 amps 350 watts. **Model WL-H4.**