

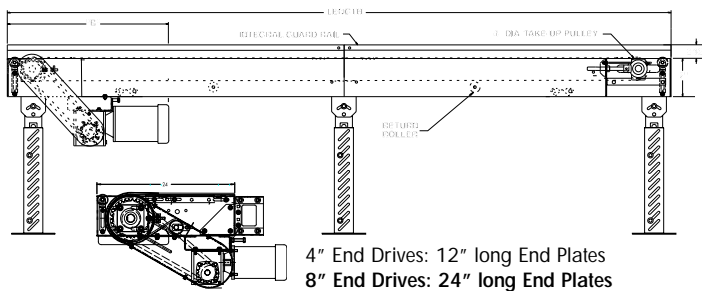
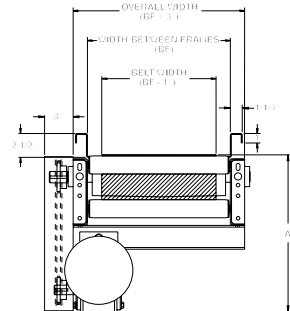
# MODEL 725TB TROUGH BED BELT CONVEYOR

24 HOUR SHIPMENTS INCLUDE ALL 1-FOOT INCREMENTS 5'-0" TO 100'-0"



Conveyor shown with optional sup-

725TB trough bed belt conveyor is ideal for handling chips, slugs, scrap wood, paper waste, boxes, packages and cartons. The troughed frame design offers integral guard rails for many trash conveyor applications.



HP@ 60 FPM	"A" MAX		"B" MAX	
	4" DRV.	8" DRV.	4" DRV.	8" DRV.
1/3	16-5/8"	16-5/8"	27-3/32"	33-3/32"
1/2	16-5/8"	16-5/8"	27-3/32"	33-3/32"
3/4	17"	17"	27-23/32"	33-23/32"
1	17-1/4"	17-1/4"	28-15/32"	34-15/32"
1-1/2	18-1/8"	18-1/8"	31-3/32"	37-3/32"
2	19"	19"	32-3/32"	38-3/32"

## SPECIFICATIONS

**BELTING:** PVC-120 black.

**DRIVE PULLEY:** 4" dia. with 1-3/16" dia. shaft or 8" dia. with 1-7/16" dia. shaft, both machine crowned and fully lagged.

**TAIL PULLEY:** 4" dia., machine crowned, with 1-3/16" dia. shaft.

**END DRIVE:** Allows one-direction (unit) operation; add optional center drive for reversible application.

**TAKE-UP:** Screw type unit at tail pulley provides 12" belt take-up.

**SAFETY POP-OUT ROLLER:** Standard on both ends, 1.9" dia. x 16 ga. steel roller, model 196S.

**BEARINGS:** All pulley bearings are precision, heavy duty, lubricated, ball bearing units with cast iron housings.

**BED:** 7" deep x 12 ga. box type bed with bed pan braces (all widths) and with 2-1/2" deep x 12 ga. formed trough with formed flanges on sides to provide extra strength.

**MOTOR DRIVE:** 1/3 HP, 230/460/3, 60 cycle, ODP right angle gear motor.

**ROLLER CHAIN:** Drive pulley is driven by No. 50 roller chain for 1-1/2 HP or less and No. 60 chain on larger drives. Chain take-up provided on motor base.

**RETURN ROLLERS:** 1.9" dia. x 16 ga. steel, model 196S, adjustable.

**BELT SPEED:** 60 FPM, constant.

**ELECTRICAL CONTROLS:** Optional.

### ⚠ WARNING

Prevent pinch points that exist when belt conveyors are permanently attached to other conveyors or equipment!



**SPECIFICATION TABLE**

50'-0" lengths and under are equipped with 4" dia. drive pulley; over 50'-0" includes 8" dia. drive pulley

■ 24 hour shipment ■ 2 week shipment

CONVEYOR LENGTH		5'	10'	15'	20'	25'	30'	35'	40'	50'	60'	70'	80'	90'	100'
BELT	BED	UNIT WEIGHTS (lbs.)													
6"	7"	251	282	335	365	417	447	499	530	616	699	783	866	948	1031
12"	13"	274	316	382	424	490	532	598	640	755	863	973	1081	1189	1297
18"	19"	321	388	481	548	641	708	801	868	1038	1198	1370	1520	1679	1839
24"	25"	374	430	536	615	721	800	906	985	1183	1359	1557	1742	1928	2113
30"	31"	N/A	457	572	659	774	861	976	1063	1281	1463	1688	1890	2094	2296
36"	37"	N/A	501	631	733	863	965	1095	1196	1447	1654	1914	2146	2381	1612

**OPTIONAL EQUIPMENT**

**BELTING:** Black PVC ruff-top; 3-ply brown neoprene ruff-top; PVC-120 white food grade COS; PVC-150 black COS; 3-ply CN 40 urethane cover. Consult factory for other belting.

**CENTER DRIVE:** Reversible drive with integral belt take-up of 24". Specify location. Center drive option available on units 6'-0" long and above.

**SIDE MOUNTED END DRIVE:** Provides minimum conveyor height of 10" TOB (4" dia. drive pulley); 12" TOB (8" dia. drive pulley).

**OVERHEAD END DRIVE:** Provides minimum conveyor height of 8" TOB (4" dia. drive pulley); 10" TOB (8" dia. drive pulley).

**BELT SPEED:** Constant speed 10-120 FPM; DC variable speed; AC inverter variable speed. Other constant or variable speeds available.

**NOTE: CAPACITY CHANGES WITH SPEED.**

**AUXILIARY TAKE-UP:** Provides 24" of belt take-up. Specify location. See Power Accessories.

**UNDERTRUSSED BED:** Available to provide clearance underneath unit at bed joint locations. Specify location for undertrussing and desired clearance underneath unit. Consult factory.

**MOTORS:** Available through 3 HP in TEFC, explosion proof, dirty duty, brake motor, 115/230/1, 575/3, etc.

**FLOOR SUPPORTS:** Supports, knee braces, casters and polytier supports available. See Conveyor Accessories.

**CEILING HANGERS:** 5/8" dia. threaded rod with hardware to attach rods to conveyor. Provides 6' clearance between ceiling and TOB (furnished in place of floor supports). See Conveyor Accessories.

**GUARD RAILS:** Available in 2", 4" and 6" heights (model FSG) to attach to troughed frame to increase trough depth. See Conveyor Accessories.

**ELECTRICAL CONTROLS:** Magnetic starter (one direction or reversible); One direction manual starter; Momentary start/stop push button station; Forward/reversing /stop push button station. Mounting and pre-wiring for units up to 12' long.



DETAIL OF INTERMEDIATE BED SECTION



OPTIONAL OVERHEAD MOUNTED DRIVE



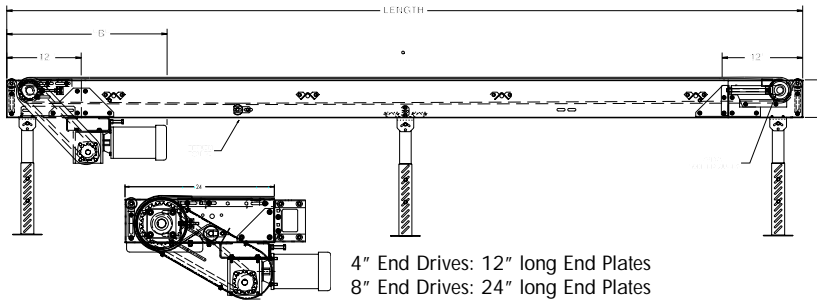
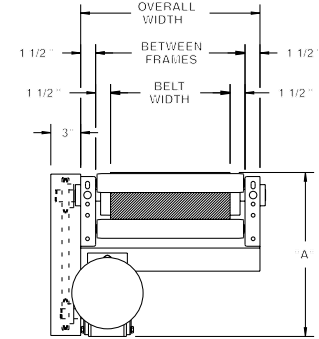
# MODEL 700SB MEDIUM DUTY SLIDER BED BELT CONVEYOR

24 HOUR SHIPMENTS INCLUDE ALL 1-FOOT INCREMENTS 5'-0" TO 100'-0"



Conveyor shown with optional supports

Slider bed belt conveyors remain the most popular of all powered conveyors, providing an economical means of transporting goods for packing, testing, inspecting and various assembly line operations



4" End Drives: 12" long End Plates  
8" End Drives: 24" long End Plates

HP@ 60 FPM	"A" MAX		"B" MAX	
	4" DRV.	8" DRV.	4" DRV.	8" DRV.
1/3	16-5/8"	16-5/8"	27-3/32"	33-3/32"
1/2	16-5/8"	16-5/8"	27-3/32"	33-3/32"
3/4	17"	17"	27-23/32"	33-23/32"
1	17-1/4"	17-1/4"	28-15/32"	34-15/32"
1-1/2	18-1/8"	18-1/8"	31-3/32"	37-3/32"
2	19"	19"	32-3/32"	38-3/32"

## SPECIFICATIONS

**BELTING:** PVC-120 black.

**DRIVE PULLEY:** 4" dia. with 1-3/16" dia. shaft or 8" dia. with 1-7/16" dia. shaft, both machine crowned and fully lagged.

**TAIL PULLEY:** 4" dia., machine crowned, with 1-3/16" dia. shaft.

**END DRIVE:** Allows one-direction (unit) operation; add optional center drive for reversible application.

**TAKE-UP:** Screw type unit at tail pulley provides 12" belt take-up.

**SAFETY POP-OUT ROLLER:** Standard on both ends, 1.9" dia. x 16 ga. steel roller, model 196S.

**BEARINGS:** All pulley bearings are precision, heavy duty, lubricated, ball bearing units with cast iron housings.

**BED:** 7" x 1-1/2" x 12 ga. channel frame with 14 ga. slider bed 9"-39" BF; 12 ga. bed 33" BF and above with bed pan braces.

**BELT SPEED:** 60 FPM, constant.

**MOTOR DRIVE:** 1/3 HP, 230/460/3, 60 cycle, ODP right angle gear motor.

**ROLLER CHAIN:** Drive pulley is driven by No. 50 roller chain for 1-1/2 HP or less and No. 60 chain on larger drives. Chain take-up provided on motor base.

**RETURN ROLLERS:** 1.9" dia. x 16 ga. steel, model 196S, adjustable.

**ELECTRICAL CONTROLS:** Optional.

### ⚠ WARNING

Prevent pinch points that exist when belt conveyors are permanently attached to other conveyors or equipment!



**SPECIFICATION TABLE**

50'-0" lengths and under are equipped with 4" dia. drive pulley; over 50'-0" includes 8" dia. drive pulley

■ 24 hour shipment ■ 2 week shipment

CONVEYOR LENGTH			5'	10'	15'	20'	25'	30'	35'	40'	50'	60'	70'	80'	90'	100'
BELT	BF	UNIT WEIGHTS (lbs.)														
6"	9"	244	265	311	331	374	395	437	459	526	591	656	720	784	848	
12"	15"	268	299	355	386	442	473	529	560	654	741	830	917	1004	1091	
18"	21"	314	369	451	506	587	642	724	779	926	1062	1211	1337	1473	1610	
24"	27"	366	422	502	568	662	728	821	887	1059	1209	1382	1541	1701	1860	
30"	33"	N/A	434	535	608	709	482	879	956	1146	1300	1497	1670	1846	2020	
36"	39"	N/A	476	591	677	793	879	990	1080	1301	1477	1707	1908	2112	2313	

**OPTIONAL EQUIPMENT**

**BELTING:** Black PVC ruff-top; 3-ply brown neoprene ruff-top; PVC-120 white food grade COS; PVC-150 black COS; 3-ply CN 40 urethane cover. Consult factory for other belting.

**CENTER DRIVE:** Reversible drive with integral belt take-up of 24". Specify location. Center drive option available on units 6'-0" long and above.

**SIDE MOUNTED END DRIVE:** Provides minimum conveyor height of 10" TOB (4" dia. drive pulley); 12" TOB (8" dia. drive pulley).

**OVERHEAD END DRIVE:** Provides minimum conveyor height of 8" TOB (4" dia. drive pulley); 10" TOB (8" dia. drive pulley).

**NOSE-OVER:** Provides smooth transition from incline to horizontal position. Single nose-over adjusts 0-20°; double nose-over adjusts 0-35°. Feeders also available. See Power Accessories.

**AUXILIARY TAKE-UP:** Provides 24" of belt take-up. Specify location. See Power Accessories.

**SIDE TABLES:** Available in 9", 15" and 21" widths (14 ga.) one or both sides. See Power Accessories.

**UNDERTRUSSED BED:** Available to provide clearance underneath unit at bed joint locations. Specify location for undertrussing and desired clearance underneath unit. Consult factory.

**CEILING HANGERS:** 5/8" dia. threaded rod with hardware to attach rods to conveyor. Provides 6' clearance between ceiling and TOB (furnished in place of floor supports). See Conveyor Accessories.

**BELT SPEED:** Constant speed 10-120 FPM; DC variable speed; AC inverter variable speed. Other constant or variable speeds available.

**NOTE: CAPACITY CHANGES WITH SPEED.**

**FLOOR SUPPORTS:** Supports, knee braces, casters and polytier supports available. See Conveyor Accessories.

**GUARD RAILS:** 1-3/4" x 1" formed channel (model GC), adjusts horizontally to 10" wider than belt and vertically to 6" above belt; formed steel fixed (model FSG in 2", 4", 6", 8", 12", and 18" heights; fixed channel (model FC); 1-1/2" angle (model GA1-1/2). See Conveyor Accessories.

**MOTORS:** Available through 3 HP in TEFC, explosion proof, dirty duty, brake motor, 115/230/1, 575/3, etc.

**ELECTRICAL CONTROLS:** Magnetic starter (one direction or reversible); One direction manual starter; Momentary start/stop push button station; Forward/reversing /stop push button station. Mounting and pre-wiring for units up to 12' long.



OPTIONAL DC VARIABLE SPEED CONTROLLER



OPTIONAL CENTER DRIVE



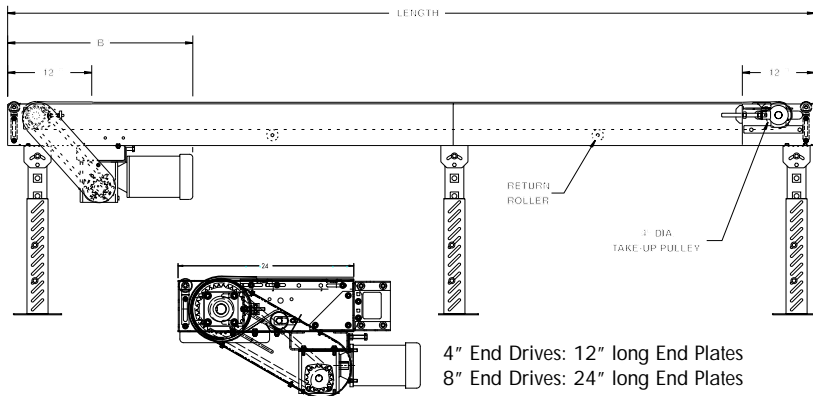
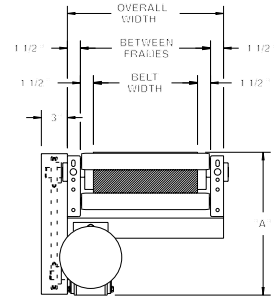
# MODEL 700BSB MEDIUM DUTY BOX STYLE SLIDER BED BELT CONVEYOR

24 HOUR SHIPMENTS INCLUDE ALL 1-FOOT INCREMENTS 5'-0" TO 100'-0"



Conveyor shown with optional supports

Model 700BSB features a box style slider bed which offers a smooth work surface, ideal for workers stationed beside this conveyor. The 700BSB is an economical choice for tasks such as packing, testing and inspecting.



HP@ 60 FPM	"A" MAX		"B" MAX	
	4" DRV.	8" DRV.	4" DRV.	8" DRV.
1/3	16-5/8"	16-5/8"	27-3/32"	33-3/32"
1/2	16-5/8"	16-5/8"	27-3/32"	33-3/32"
3/4	17"	17"	27-23/32"	33-23/32"
1	17-1/4"	17-1/4"	28-15/32"	34-15/32"
1-1/2	18-1/8"	18-1/8"	31-3/32"	37-3/32"
2	19"	19"	32-3/32"	38-3/32"

4" End Drives: 12" long End Plates  
8" End Drives: 24" long End Plates

## SPECIFICATIONS

**BELTING:** PVC-120 black.

**DRIVE PULLEY:** 4" dia. with 1-3/16" dia. shaft or 8" dia. with 1-7/16" dia. shaft, both machine crowned and fully lagged.

**TAIL PULLEY:** 4" dia., machine crowned, with 1-3/16" dia. shaft.

**END DRIVE:** Allows one-direction (unit) operation; add optional center drive for reversible application.

**SAFETY POP-OUT ROLLER:** Standard on both ends, 1.9" dia. x 16 ga. steel roller, model 196S.

**TAKE-UP:** Screw type unit at tail pulley provides 12" belt take-up.

**BED:** 7" deep x 12 ga. box type construction.

**BEARINGS:** All pulley bearings are precision, heavy duty, lubricated, ball bearing units with cast iron housings.

**RETURN ROLLERS:** 1.9" dia. x 16 ga. steel, model 196S, adjustable.

**MOTOR DRIVE:** 1/3 HP, 230/460/3, 60 cycle, ODP right angle gear motor.

**ROLLER CHAIN:** Drive pulley is driven by No. 50 roller chain for 1-1/2 HP or less and No. 60 chain on larger drives. Chain take-up provided on motor base.

**BELT SPEED:** 60 FPM, constant.

**ELECTRICAL CONTROLS:** Optional.

## ⚠ WARNING

Prevent pinch points that exist when belt conveyors are permanently attached to other conveyors or equipment!



## SPECIFICATION TABLE

50'-0" lengths and under are equipped with 4" dia. drive pulley; over 50'-0" includes 8" dia. drive pulley

■ 24 hour shipment ■ 2 week shipment

CONVEYOR LENGTH		5'	10'	15'	20'	25'	30'	35'	40'	50'	60'	70'	80'	90'	100'
BELT	OAW	UNIT WEIGHTS (lbs.)													
6"	9"	238	253	293	307	344	359	395	411	466	519	572	624	676	728
12"	18"	265	293	346	375	428	456	509	537	625	707	790	871	952	1034
18"	24"	314	369	450	505	586	640	722	777	923	1059	1207	1333	1468	1605
24"	30"	369	429	512	582	679	748	845	914	1093	1250	1430	1595	1762	1928
30"	36"	N/A	447	555	634	752	821	925	1008	1211	1378	1588	1774	1963	2150
36"	42"	N/A	496	621	716	854	937	1058	1130	1397	1593	1842	2062	2285	2506

## OPTIONAL EQUIPMENT

**BELTING:** Black PVC ruff-top; 3-ply brown neoprene ruff-top; PVC-120 white food grade COS; PVC-150 black COS; 3-ply CN 40 urethane cover. Consult factory for other belting.

**CENTER DRIVE:** Reversible drive with integral belt take-up of 24". Specify location. Center drive option available on units 6'-0" long and above.

**SIDE MOUNTED END DRIVE:** Provides minimum conveyor height of 10" TOB (4" dia. drive pulley); 12" TOB (8" dia. drive pulley).

**OVERHEAD END DRIVE:** Provides minimum conveyor height of 8" TOB (4" dia. drive pulley); 10" TOB (8" dia. drive pulley).

**AUXILIARY TAKE-UP:** Provides 24" of belt take-up. Specify location. See Power Accessories.

**NOSE-OVER:** Provides smooth transition from incline to horizontal position. Single nose-over adjusts 0-20°; double nose-over adjusts 0-35°. Feeders also available. See Power Accessories.

**UNDERTRUSSED BED:** Available to provide clearance underneath unit at bed joint locations. Specify location for undertrussing and desired clearance underneath unit. Consult factory.

**SIDE TABLES:** Available in 9", 15" and 21" widths (14 ga.) one or both sides. See Power Accessories.

**FLOOR SUPPORTS:** Supports, knee braces, casters and polytier supports available. See Conveyor Accessories.

**CEILING HANGERS:** 5/8" dia. threaded rod with hardware to attach rods to conveyor. Provides 6' clearance between ceiling and TOB (furnished in place of floor supports). See Conveyor Accessories.

**GUARD RAILS:** 1-3/4" x 1" formed channel (model GC), adjusts horizontally to 10" wider than belt and vertically to 6" above belt; formed steel fixed (model FSG in 2", 4", 6", 8", 12", and 18" heights; fixed channel (model FC); 1-1/2" angle (model GA1-1/2). See Conveyor Accessories.

**BELT SPEED:** Constant speed 10-120 FPM; DC variable speed; AC inverter variable speed. Other constant or variable speeds available.

**NOTE: CAPACITY CHANGES WITH SPEED.**

**MOTORS:** Available through 3 HP in TEFC, explosion proof, dirty duty, brake motor, 115/230/1, 575/3, etc.

**ELECTRICAL CONTROLS:** Magnetic starter (one direction or reversible); One direction manual starter; Momentary start/stop push button station; Forward/reversing /stop push button station. Mounting and pre-wiring for units up to 12' long.



OPTIONAL CENTER DRIVE

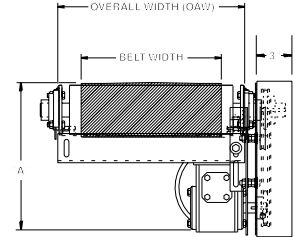


# MODEL 450BOS BOX STYLE SLIDER BED BELT CONVEYOR W/ ROUND END PLATES

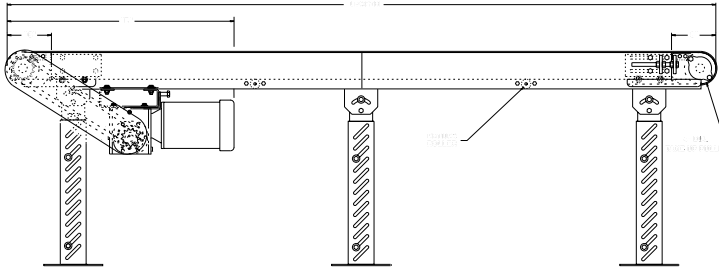
24 HOUR SHIPMENTS INCLUDE ALL 1-FOOT INCREMENTS 5'-0" TO 100'-0"



Conveyor shown with optional supports



Model 450BOS slider bed belt conveyor is one of the most popular and common means of transporting goods for packing, testing, inspecting and a variety of assembly line operations. 450BOS features a box style slider bed, ideal for workers stationed alongside the conveyor.



HP@ 60 FPM	"A" MAX		"B" MAX	
	4" DRV.	8" DRV.	4" DRV.	8" DRV.
1/3	13-13/16"	13-13/16"	29-3/32"	32-3/32"
1/2	13-13/16"	13-13/16"	29-3/32"	32-3/32"
3/4	14-3/16"	14-3/16"	29-23/32"	32-23/32"
1	14-1/2"	14-1/2"	30-15/32"	33-15/32"
1-1/2	15-9/16"	15-9/16"	32-19/32"	35-19/32"
2	16-7/16"	16-7/16"	33-19/32"	36-19/32"

## SPECIFICATIONS

**BELTING:** PVC-120 black.

**DRIVE PULLEY:** 4" dia. with 1-3/16" dia. shaft or 8" dia. with 1-7/16" dia. shaft, both machine crowned and fully lagged, mounted in round style end plates.

**TAIL PULLEY:** 4" dia., machine crowned, with 1-3/16" dia. shaft, mounted in round style end plates.

**END DRIVE:** Allows one-direction (unit) operation; add optional center drive for reversible application.

**TAKE-UP:** Belt take-up provided at tail pulley with screw type unit.

**BELT SPEED:** 60 FPM, constant.

**BED:** 4-1/2" deep x 12 ga. box type construction with bed pan braces (30" OAW and above) and round style end plates.

**BEARINGS:** All pulley bearings are precision, heavy duty, lubricated, ball bearing units with cast iron housings.

**RETURN ROLLERS:** 1.9" dia. x 16 ga. steel, model 196S, adjustable.

**MOTOR DRIVE:** 1/3 HP, 230/460/3, 60 cycle, ODP right angle gear motor.

**ROLLER CHAIN:** Drive pulley is driven by No. 50 roller chain for 1-1/2 HP or less and No. 60 chain on larger drives. Chain take-up provided on motor base.

**ELECTRICAL CONTROLS:** Optional.

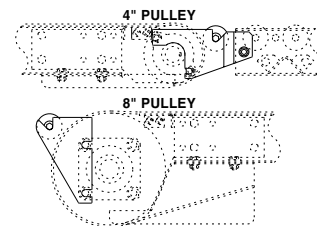
## SPECIFICATIONS

**CONSTRUCTION:** Brackets are 10 ga. HRS painted steel and bolt at end of powered conveyor to butt couplings. Gravity conveyor attaches to connector bracket.

**POP-OUT ROLLERS:** Mounts into slot on bracket for safety design. Use of connector bracket eliminates dangerous pinch points.

### CBOS-4-24

CBOS-(pulley diameter\*)-(overall width)



### ⚠ WARNING

Prevent pinch points that exist when belt conveyors are permanently attached to other conveyors or equipment! Use connector brackets with safety pop out rollers shown above.



**SPECIFICATION TABLE**

50'-0" lengths and under are equipped with 4" dia. drive pulley; over 50'-0" includes 8" dia. drive pulley

■ 24 hour shipment ■ 2 week shipment

CONVEYOR LENGTH		5'	10'	15'	20'	25'	30'	35'	40'	50'	60'	70'	80'	90'	100'
BELT	OAW	UNIT WEIGHTS (lbs.)													
6"	10"	234	255	278	299	322	343	365	387	431	474	518	561	605	648
12"	16"	261	298	334	371	407	444	480	517	590	663	736	809	882	954
18"	22"	310	374	438	502	566	630	694	758	886	1014	1142	1270	1398	1525
24"	28"	365	443	521	599	677	755	833	911	1068	1224	1380	996	1692	1848
30"	34"	N/A	483	571	659	747	836	924	1012	1189	1365	1542	1718	1895	2070
36"	40"	N/A	539	644	749	854	959	1064	1168	1378	1588	1798	2007	2217	2426

**OPTIONAL EQUIPMENT**

**BELTING:** Black PVC ruff-top; 3-ply brown neoprene ruff-top; PVC-120 white food grade COS; PVC-150 black COS; 3-ply CN 40 urethane cover. Consult factory for other belting.

**CENTER DRIVE:** Reversible drive with integral belt take-up of 24". Specify location. Center drive option available on units 6'-0" long and above.

**SIDE MOUNTED END DRIVE:** Provides minimum conveyor height of 10" TOB (4" dia. drive pulley); 11" TOB (8" dia. drive pulley).

**OVERHEAD END DRIVE:** Provides minimum conveyor height of 6" TOB (4" dia. drive pulley); 10" TOB (8" dia. drive pulley).

**AUXILIARY TAKE-UP:** Provides 24" of belt take-up. Specify location. See Power Accessories.

**SIDE TABLES:** Available in 9", 15" and 21" widths (14 ga.) one or both sides. See Power Accessories.

**FLOOR SUPPORTS:** Supports, knee braces, casters and polytier supports available. See Conveyor Accessories.

**NOSE-OVER:** Provides smooth transition from incline to horizontal position. Single nose-over adjusts 0-20°; double nose-over adjusts 0-35°. See Power Accessories.

**UNDERTRUSSED BED:** Available to provide clearance underneath unit at bed joint locations. Specify location for undertrussing and desired clearance underneath unit. Consult factory.

**CEILING HANGERS:** 5/8" dia. threaded rod with hardware to attach rods to conveyor. Provides 6' clearance between ceiling and TOB (furnished in place of floor supports). See Conveyor Accessories.

**MOTORS:** Available through 3 HP in TEFC, explosion proof, dirty duty, brake motor, 115/230/1, 575/3, etc.

**GUARD RAILS:** 1-3/4" x 1" formed channel (model GC), adjusts horizontally to 10" wider than belt and vertically to 6" above belt; formed steel fixed (model FSG in 2", 4", 6", 8", 12", and 18" heights; fixed channel (model FC); 1-1/2" angle (model GA1-1/2). See Conveyor Accessories.

**BELT SPEED:** Constant speed 10-120 FPM; DC variable speed; AC inverter variable speed. Other constant or variable speeds available.

**NOTE: CAPACITY CHANGES WITH SPEED.**

**ELECTRICAL CONTROLS:** Magnetic starter (one direction or reversible); One direction manual starter; Momentary start/stop push button station; Forward/reversing /stop push button station. Mounting and pre-wiring for units up to 12' long.



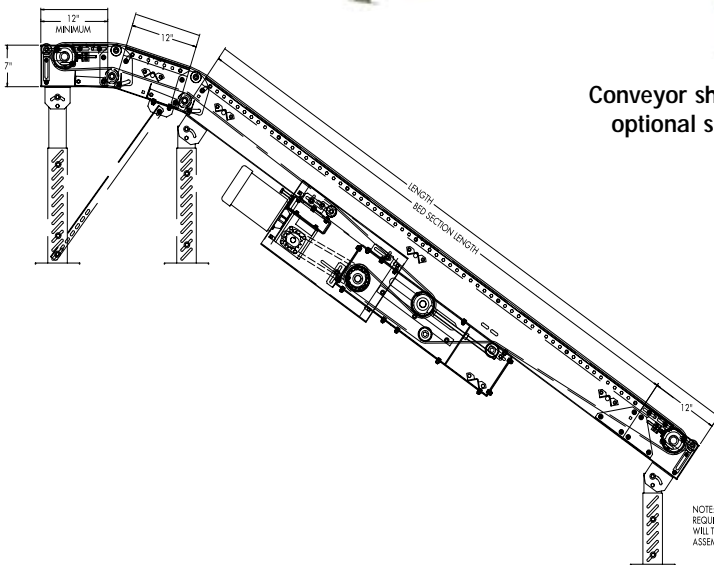
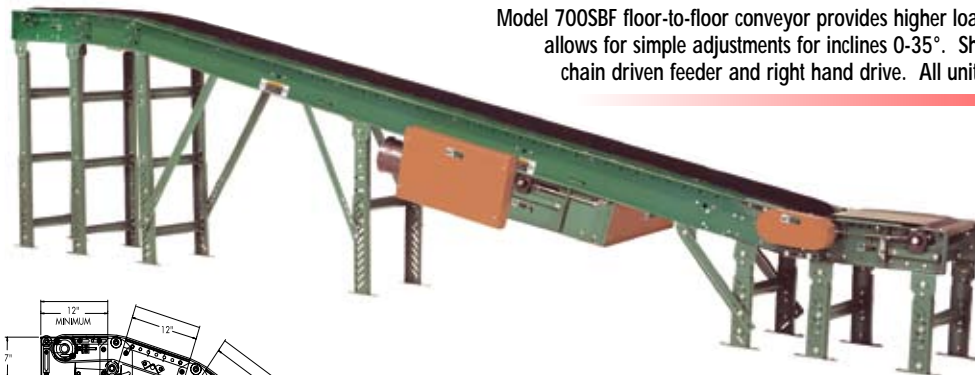
4" END DRIVE WITH ROUND END PLATES



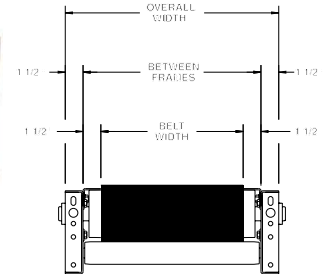
# MODEL 700SBF SLIDER BED INCLINED FLOOR-TO-FLOOR BELT CONVEYOR

24 HOUR SHIPMENTS INCLUDE ALL 1-FOOT INCREMENTS 10'-0" TO 50'-0"

Model 700SBF floor-to-floor conveyor provides higher load capacity, reversible flow and nose-over allows for simple adjustments for inclines 0-35°. Shown with optional supports, knee braces, chain driven feeder and right hand drive. All units furnished standard with left hand drive.



Conveyor shown with optional supports



HP@ 60 FPM	"A" MAX		"B" MAX	
	4" DRV.	8" DRV.	4" DRV.	8" DRV.
1/3	16-5/8"	17-5/8"	58-5/32"	58-5/32"
1/2	16-5/8"	17-5/8"	58-5/32"	58-5/32"
3/4	17"	17-5/8"	58-25/32"	58-25/32"
1	17-1/4"	17-5/8"	59-17/32"	59-17/32"
1-1/2	18-1/8"	18-1/8"	61-21/32"	61-21/32"
2	19"	19"	62-21/32"	62-21/32"

NOTE: WHEN CHAIN FEEDER IS REQUIRED END DRIVE ASSEMBLY WILL TAKE PLACE OF FIXED END ASSEMBLY FOR CONNECTION.

## SPECIFICATIONS

**BELTING:** Black PVC ruff-top.

**DRIVE PULLEY:** 8" dia. with 1-7/16" dia. shaft, both machine crowned and fully lagged.

**TAIL PULLEY:** 4" dia., machine crowned, with 1-3/16" dia. shaft.

**RETURN ROLLERS:** 1.9" dia. x 16 ga. steel, model 196S, adjustable.

**CENTER DRIVE:** Reversible drive with 24" integral belt take-up.

**BELT SPEED:** 60 FPM, constant.

**SAFETY POP-OUT ROLLER:** Standard on both ends, 1.9" dia. x 16 ga. steel roller, model 196S.

**NOSE-OVER:** Provides smooth transition from incline to horizontal position. Single nose-over adjusts 0-20°; double nose-over adjusts 0-35° (specify single or double).

**BEARINGS:** All pulley bearings are precision, heavy duty, lubricated, ball bearing units with cast iron housings.

**BED:** 7" x 1-1/2" x 12 ga. channel frame with 14 ga. slider bed 9"-39" BF; 12 ga. bed 33" BF and above with bed pan braces.

**ROLLER CHAIN:** Drive pulley is driven by No. 50 roller chain for 1-1/2 HP or less and No. 60 chain on larger drives. Chain take-up provided on motor base.

**MOTOR DRIVE:** 1/3 HP, 230/460/3, 60 cycle, ODP right angle gear motor.

**FLOOR SUPPORTS:** Optional.

**ELECTRICAL CONTROLS:** Optional.

## ⚠ WARNING

Prevent pinch points that exist when belt conveyors are permanently attached to other conveyors or equipment!



## SPECIFICATION TABLE

■ 24 hour shipment ■ 2 week shipment

CONVEYOR LENGTH			10'	15'	20'	25'	30'	35'	40'	45'	50'
BELT	BF	OAW	Units weights (lbs.)								
6"	9"	12"	265	290	331	366	395	430	459	494	526
12"	15"	18"	299	344	386	431	473	518	560	605	654
18"	21"	24"	369	439	506	576	641	711	779	849	926
24"	27"	30"	422	502	568	648	728	808	887	967	1059
30"	33"	36"	434	539	608	713	782	887	956	1061	1146
36"	39"	42"	477	597	672	792	872	992	1071	1191	1312
42"	45"	48"	520	655	736	871	960	1095	1186	1321	1478
48"	51"	54"	563	713	800	956	1049	1202	1301	1454	1644

### OPTIONAL EQUIPMENT

**BELTING:** 3 ply, brown neoprene ruff-top. Consult factory for other belting.

**SIDE MOUNTED END DRIVE:** Available as option when necessary to move center drive for unit clearance. Minimum horizontal nose-over length required is 3' (2' horizontal may be used if product does not overhang conveyor OAW).

**BED:** Available in boxed slider bed.

**UNDERTRUSSED BED:** Available to provide clearance underneath unit at bed joint locations. Specify location for undertrussing and desired clearance underneath unit. Consult factory.

**FLOOR SUPPORTS:** Various height adjustable supports and knee braces available. See Conveyor Accessories.

**POWERED FEEDER:** Integral belt feeder or separate chain driven belt feeder.

**MOTORS:** Available through 3 HP in TEFC, explosion proof, dirty duty, brake motor, 115/230/1, 575/3, etc.

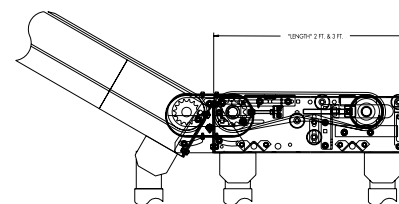
**CEILING HANGERS:** 5/8" dia. threaded rod w/ hardware to attach rods (specify rod length) to conveyor. See Conveyor Accessories.

**GUARD RAILS:** 1-3/4" x 1" formed channel (model GC), adjusts horizontally to 10" wider than belt and vertically to 6" above belt; formed steel fixed (model FSG in 2", 4", 6", 8", 12", and 18" heights. See Conveyor Accessories.

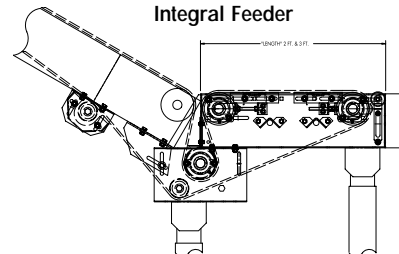
**BELT SPEED:** Constant speed 3-120 FPM; DC variable speed; AC inverter variable speed. Other constant or variable speeds available. **NOTE: CAPACITY CHANGES WITH SPEED.**

**ELECTRICAL CONTROLS:** Magnetic starter (one direction or reversible); One direction manual starter; Momentary start/stop push button station; Forward/reversing/stop push button station.

Chain Feeder



Integral Feeder



OPTIONAL CHAIN DRIVEN FEEDER



OPTIONAL INTEGRAL FEEDER