



HANDLE-IT™

M I I E Q U I P M E N T

Handle-It Hal says,
"Handle it? You
betcha!"



Dock & Protection Equipment

Guard Rail, Dock Boards, Levelers, Dock Safety Products

TABLE OF CONTENTS

- Protection Equipment2-3**
 - Handle-It Guard Rails2
 - Guard Rail Specification2**
 - Handle-It Rack Protectors3
 - Handle-It Track Guards3
 - Handle-It Post Protectors3
 - Handle-It Bollards3

- Dock Equipment4-10**
 - Handle-It Edge of Dock Levelers4
 - Handle-It Fork Extension Pairs4
 - Aluminum Dock Plates and Dock Boards4-5**
 - Handle-It Aluminum Dock Plates4
 - Handle-It Aluminum Truck Dock Boards with Steel Side Curbs5
 - Handle-It All Welded Aluminum Truck Dock Boards5
 - Steel Truck Dock Boards6**
 - Handle-It Steel Dock Boards with Legs and Chains6
 - Handle-It Steel Dock Boards with Loops and Pins6
 - Handle-It Steel Combination Dock Boards6
 - Dock Plates and Dock Boards Selection Guide7**
 - Steel Rail Dock Boards8-9**
 - Handle-It Steel Rail Dock Boards8
 - Handle-It Steel Rail Dock Board Worksheet9

- Yard Ramps10**
 - Handle-It Aluminum Yard Ramps10
 - Handle-It Steel Yard Ramps10

- Dock Accessories11-12**
 - Handle-It Aluminum Walk Ramps11
 - Handle-It Aluminum Curb Ramps11
 - Handle-It Pallet Pullers11
 - Handle-It Aluminum Wheel Risers12
 - Handle-It Truck Restraints12

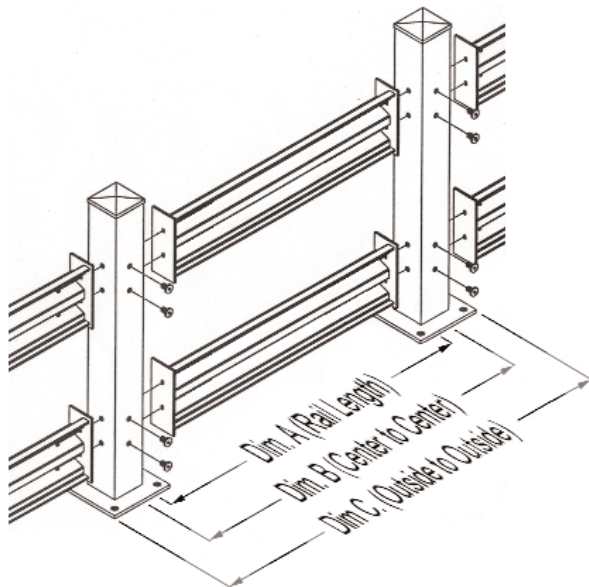
- Dock Lifts & Pit Levelers13-15**
 - Handle-It Dock Lifts13
 - Handle-It Pit Levelers14
 - Pit Leveler Selection Guide15**

- Policies16**
- Handle-It WarrantyBack Cover**

Guard Rail

Model Number	Description	Weight (Lbs.)	Stock Item
Guard Rail			
GR-10	10' Rail	84	X
GR-9	9' Rail	76	X
GR-8	8' Rail	70	X
GR-7	7' Rail	62	X
GR-6	6' Rail	53	X
GR-5	5' Rail	43	X
GR-4	4' Rail	33	X
GR-3	3' Rail	24	X
GR-2	2' Rail	16	X
Guard Rail Columns			
CS-1	Single Rail Column	37	X
CS-2	Double Rail Column	58	X
Guard Rail Options			
LOA	Lift-Out Adapter (Pair)	10	X
CSC-1	Single Rail Corner Column	37	
CSO-1	Single Rail Offset Column	37	
CSC-2	Double Rail Corner Column	58	
CSO-2	Double Rail Offset Column	58	
WA	Wedge Anchor	1	X

Note: Price of columns includes all assembly and anchoring hardware.



Guard Rail Dimension Information

Rail	Dim. A	Dim. B	Dim. C.
GR-10	115"	120"	130"
GR-9	103"	108"	118"
GR-8	91"	96"	106"
GR-7	79"	84"	94"
GR-6	67"	72"	82"
GR-5	55"	60"	70"
GR-4	43"	48"	58"
GR-3	31"	36"	46"
GR-2	19"	24"	34"



Double Rail System

Features

- Ideal for preventing damage to expensive machinery, equipment, office walls, electrical boxes, water mains, mezzanines and most importantly personnel from forklifts and other mobile equipment
- Easy installation with hardware and floor anchors included
- Painted safety yellow for high visibility
- Designed, tested and rated to withstand 10,000 lbs at 4 M.P.H.
- Simple layout with universal column design
- In stock for fast delivery (selected sizes)
- Columns are steel square tube mounted on 10" x 10" base plates
- Rails are formed from high tensile 10 gauge steel for impact strength
- Flange nuts are welded inside columns at each hole for ease of installation
- Optional Offset Columns are available for tight applications



Single Rail System

Guard Rail Specification

To ensure proper protection consider the following:

- Measure overall length of area that is to be protected.
- Is there a protruding object or other unusual configuration to measure? (Going around corners)
- Is this a single or double rail application? (The height to protect is the key factor.)
- Place the guard rail a minimum of 12" in front of protected equipment.

Laying Out Gard Rail

When determining rail length use dimension "B" Center of Column to Center of Column. Lift-Out Adapters add 1" to each span of rail.

If the application is a very tight fit then you must measure from outside to outside of base plates (Dimension "C").

Lift-Out Adapters

When necessary to access equipment or space behind the guard rail system, lift-out adapters are available. These adapters use slot assemblies on the columns to allow the rails to be removed and then dropped back into place.

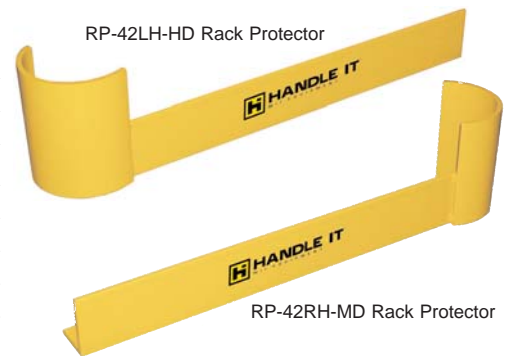
Optional Lift-Out Adapter System



Rack Protectors

Model Number	Description	Weight (Lbs.)	Stock Item
Medium Duty Rack Protectors			
RP-42LH-MD	Medium Duty Left Hand 42" (46" OAL)	38	X
RP-42RH-MD	Medium Duty Right Hand 42" (46" OAL)	38	X
RP-48LH-MD	Medium Duty Left Hand 48" (50.5" OAL)	42	X
RP-48RH-MD	Medium Duty Right Hand 48" (50.5" OAL)	42	X
Heavy Duty Rack Protectors			
RP-42LH-HD	Heavy Duty Left Hand 42" (46" OAL)	64	X
RP-42RH-HD	Heavy Duty Right Hand 42" (46" OAL)	64	X
RP-48LH-HD	Heavy Duty Left Hand 48" (50.5" OAL)	70	X
RP-48RH-HD	Heavy Duty Right Hand 48" (50.5" OAL)	70	X
RP-48EX-HD	Heavy Duty 48" Extender	52	X
RP-62EX-HD	Heavy Duty 62" Extender	62	X

Note: Anchoring wedge bolts not included



Features

- Floor-level shield protects rack ends from forklift damage
- Available in 42" and 48" rack configuration right-side or left-side or extender angle - all with floor mounting holes
- Durable steel plate uniquely formed to encompass rack ends
- Heavy Duty Rack Protectors are recommended for powered equipment areas
- Medium Duty Rack Protectors are recommended for non-powered equipment areas

Track Guards

Model Number	Description	Weight (Lbs.)	Stock Item
TG-24LH	24" High Left Track Guard	30	
TG-24RH	24" High Right Track Guard	30	
TG-48LH	48" High Left Track Guard	53	X
TG-48RH	48" High Right Track Guard	53	X

Note: Floor anchoring wedge bolts included



TG-48 Truck Guard

Features

- Simple, effective way to shield overhead door tracks from damage
- Steel guard bolts to floor and wall for easy installation
- Eliminates expensive repairs and eliminates dock downtime
- Protects without interfering with dock operation
- Constructed of durable steel plate 1/4" thick with fully welded base offering tough functional protection

Post Protectors

Model Number	Description	Weight (Lbs.)	Stock Item
P12	12" High Post Protectors	12	X
P18	18" High Post Protectors	18	X
P24	24" High Post Protectors	24	X

Note: Anchoring wedge bolts not included



P18 Post Protector

Features

- Sturdy inexpensive steel guards protect valuable stored materials and rack/shelving uprights
- Quick and efficient installation with four 1/2" diameter concrete wedge anchors (not included)
- Floor mounted - keeps impact separate from rack upright
- Fabricated from rugged 1/4" steel plate for durability
- Standard heights of 12", 18" and 24" available to accommodate most protection requirements.
- Note: Floor mounted post protectors fit only standard non-seismic upright floor pads. (Ask for quote for non-standard post protectors.)

Bollards

Model Number	Description	Weight (Lbs.)	Stock Item
BO-4-24	24" High 4" Dia. Bollard	46	
BO-4-36	36" High 4" Dia. Bollard	53	
BO-4-42	42" High 4" Dia. Bollard	60	X
BO-6-42	42" High 6" Dia. Bollard	118	X

Note: Anchoring wedge bolts included

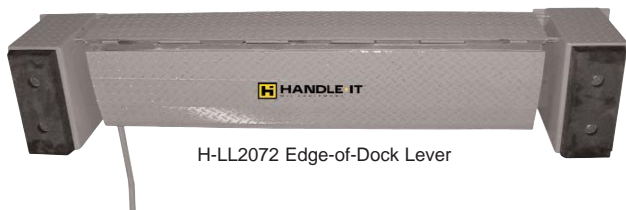


BO-6-42 Bollard

Features

- Bollards, 4.5" and 6" diameter x 42" high, securely mount to concrete floor with supplied concrete wedge anchors (3/4" diameter anchors for 6" Bollards and 1/2" diameter anchors for 4" bollards)
- Quick easy installation with only a few tools to drill and install wedge anchors - requires no masonry work
- Protect equipment, electrical panels, and doorways with these sturdy steel columns
- Provides an excellent barrier separating vehicles from people

Edge of Dock Levelers



H-LL2072 Edge-of-Dock Leveler

Features

- Deck and lip plate material is 55,000 lb. minimum yield safety tread plate
- Totally enclosed hinge pin supported by hinge tubes with grease fittings
- Long-lasting, adjustable torsion spring to give the precise amount of support for placement of the leveler
- Full 5" above and 5" below dock working range
- Two molded rubber bumpers on steel bump blocks are standard
- Easy to install, operate and maintain

Model Number	Useable Lip Length	Overall Width	Overall Width Span	Weight (Lbs.)	Stock Item
20,000 lbs. Capacity Edge-of-Dock Leveler					
H-LL2066	15"	66"	102"	27-3/4"	489 X
H-LL2072	15"	72"	108"	27-3/4"	534 X
H-LL2078	15"	78"	114"	27-3/4"	579 X
25,000 lbs. Capacity Edge-of-Dock Leveler					
H-LL2566	15"	66"	102"	27-3/4"	540
H-LL2572	15"	72"	108"	27-3/4"	586
H-LL2578	15"	78"	114"	27-3/4"	633
30,000 lbs. Capacity Edge-of-Dock Leveler					
H-LL3066	15"	66"	102"	27-3/4"	550
H-LL3072	15"	72"	108"	27-3/4"	596
H-LL3078	15"	78"	114"	27-3/4"	625
Edge-of-Dock Leveler Accessories					
H-AP12120	12" wide x 120" long approach plate			113	X
H-AP24120	24" wide x 120" long approach plate			327	X



FE-4-60 Fork Extensions

Features

- Permits lifting long and large items with a fork truck
- Welded retainer keeps extension on forks when in use
- Extensions for shaft mounted forks available on special order
- Other sizes available on special order
- Fits forks up to 2 inches in thickness

Fork Extensions

Model Number	Minimum Length	Fork Length	Fork Width	Weight (Lbs.)	Stock Item
FE-4-60	60"	40"	4"	95	X
FE-4-72	72"	48"	4"	120	X
FE-4-84	84"	56"	4"	130	X
FE-4-96	96"	64"	4"	150	X
FE-5-60	60"	40"	5"	110	X
FE-5-72	72"	48"	5"	130	X
FE-5-84	84"	56"	5"	145	X
FE-5-96	96"	64"	5"	175	X
FE-6-72	72"	48"	6"	135	X

Aluminum Dock Plates

Model Number	Size Width	Size Length	Height Difference	Capacity (Lbs.)	Weight (Lbs.)	Stock Item
Light Duty - 5/16" Thick Aluminum Dock Plate						
AP-L3624	36"	24"	3"	2,640	46	X
AP-L3636	36"	36"	5"	1,760	59	X
AP-L4836	48"	36"	5"	2,340	72	X
AP-L4842	48"	42"	6"	2,010	85	
AP-L4848	48"	48"	7"	1,760	94	X
AP-L7236	72"	36"	5"	3,510	99	
Medium Duty - 3/8" Thick Aluminum Dock Plate						
AP-M3624	36"	24"	3"	3,600	51	X
AP-M3636	36"	36"	5"	2,500	68	X
AP-M4836	48"	36"	5"	3,500	83	X
AP-M4842	48"	42"	6"	3,000	96	
AP-M4848	48"	48"	7"	2,600	107	X
AP-M4860	48"	60"	10"	1,800	132	X
AP-M7236	72"	36"	5"	4,300	118	
Heavy Duty - 1/2" Thick Aluminum Dock Plate						
AP-H3624	36"	24"	3"	6,200	62	
AP-H3636	36"	36"	5"	4,300	82	X
AP-H4836	48"	36"	5"	5,300	104	
AP-H4842	48"	42"	6"	4,300	122	
AP-H4848	48"	48"	7"	3,800	137	X
AP-H4860	48"	60"	10"	2,900	168	X
AP-H7236	72"	36"	5"	7,800	145	



AP-M4848 Aluminum Dock Plate

Features

- Capacities up to 7,800 lbs
- Standard widths from 36" to 72"
- Standard lengths from 24" to 60"
- Optional handles are provided for easy lifting and moving
- Aluminum diamond plate used for positive traction and safety
- 11 degree bend angle allows use in variety of height difference applications
- Beveled edges for easy entry and exit
- Custom sizes available on special order

Aluminum Dock Boards with Steel Side Curbs



ABS-M Aluminum Dock Board with Steel Side Curbs

Features

- Bolted locking legs can be reversed for refer applications
- Aluminum diamond plate used for positive traction and safety
- Lightweight aluminum makes portability easy
- The resilience of aluminum is combined with the durability and strength of steel
- Beveled edges for easy loading and unloading
- Custom sizes available on special order
- Optional lifting chains include chains, hook, curb mounts, and attaching hardware

Model Number	Size Width	Size Length	Height Difference	Capacity (Lbs.)	Weight (Lbs.)	Stock Item
Medium Duty - 3/8" Thick Aluminum Plate						
ABS-M6036	60"	36"	5"	10,000	130	
ABS-M6048	60"	48"	7"	10,000	170	X
ABS-M6060	60"	60"	9"	10,000	210	X
ABS-M6072	60"	72"	11"	10,000	250	X
ABS-M7236	72"	36"	5"	10,000	150	
ABS-M7248	72"	48"	7"	10,000	195	X
Heavy Duty - 1/2" Thick Aluminum Plate						
ABS-H6036	60"	36"	5"	15,000	160	
ABS-H6048	60"	48"	7"	15,000	210	X
ABS-H6060	60"	60"	9"	15,000	255	X
ABS-H6072	60"	72"	11"	15,000	295	X
ABS-H7236	72"	36"	5"	15,000	185	
ABS-H7248	72"	48"	7"	15,000	240	X
Options						
60C	60" Lifting Chain				40	X
72C	72" Lifting Chain				44	X

All Welded Aluminum Dock Boards

Model Number	Size Width	Size Length	Height Difference	Capacity (Lbs.)	Weight (Lbs.)	Stock Item
Light Duty - 5/16" Thick Aluminum Plate						
AB-L3636	36"	36"	5"	7,000	67	X
AB-L4836	48"	36"	5"	7,000	80	X
AB-L4848	48"	48"	7"	7,000	107	X
AB-L6036	60"	36"	5"	7,000	93	
AB-L6048	60"	48"	7"	7,000	124	X
AB-L6060	60"	60"	9"	7,000	155	X
AB-L7248	72"	48"	7"	5,000	141	
AB-L7260	72"	60"	9"	5,000	177	
Medium Duty - 3/8" Thick Aluminum Plate						
AB-M4836	48"	36"	5"	10,000	97	
AB-M4848	48"	48"	7"	10,000	130	
AB-M6036	60"	36"	5"	10,000	113	X
AB-M6048	60"	48"	7"	10,000	151	X
AB-M6060	60"	60"	9"	10,000	188	X
Heavy Duty - 3/8" Thick Aluminum Plate						
AB-H4836	48"	36"	5"	14,000	104	
AB-H4848	48"	48"	7"	14,000	139	
AB-H6036	60"	36"	5"	14,000	120	X
AB-H6048	60"	48"	7"	14,000	160	X
AB-H6060	60"	60"	9"	14,000	200	X
AB-H7248	72"	48"	7"	12,000	181	
AB-H7260	72"	60"	9"	12,000	226	
Extra Heavy Duty - 1/2" Thick Aluminum Plate						
AB-X4836	48"	36"	5"	17,000	125	
AB-X4848	48"	48"	7"	17,000	167	
AB-X6036	60"	36"	5"	17,000	146	
AB-X6048	60"	48"	7"	17,000	195	X
AB-X6060	60"	60"	9"	17,000	244	X
AB-X7248	72"	48"	7"	15,000	223	
AB-X7260	72"	60"	9"	15,000	279	
Options						
60C	60" Lifting Chain				40	X
72C	72" Lifting Chain				44	X
LH	Lifting Handles (Pair)				20	X



AB-M6060 All Welded Aluminum Dock Board

Features

- Capacities from 7,000 lbs to 17,000 lbs
- Standard widths from 36" to 72"
- Standard lengths from 36" to 60"
- Optional handles or lifting chains are available for easy lifting and moving
- Bolted locking legs can be reversed for refer applications
- Aluminum diamond plate used for positive traction and safety
- 11 degree bend angle allows use in variety of height difference applications
- Beveled edges for easy entry and exit
- Custom sizes available on special order

STEEL TRUCK DOCK BOARDS



Steel Truck Dock Boards

Model Number	Size		Ht. Diff.		Weight (Lbs.)	Stock Item
	Width	Length	W/Fk.	Lft.		
10STBL-6036	60"	36"	5"		240	
10STBL-6048	60"	48"	7"		395	X
10STBL-6054	60"	54"	8"		432	
10STBL-6060	60"	60"	9"		480	X
10STBL-7248	72"	48"	7"		583	X
10STBL-7260	72"	60"	9"		704	



10STBL Steel Truck Board with Locking Legs and Chains

Features

- 10,000 LB. capacity
- Widths from 60" to 72"
- Lengths from 30" to 60"
- Safety curbs to protect runoffs
- Durability of all steel construction
- Diamond plate is used for positive traction and safety
- Beveled edges for easy loading and unloading
- Combination of steel locking legs and 11" lip secure positioning of board
- Lift chains are included for portability
- Economical and durable

Steel Truck Dock Boards with Locking Pins

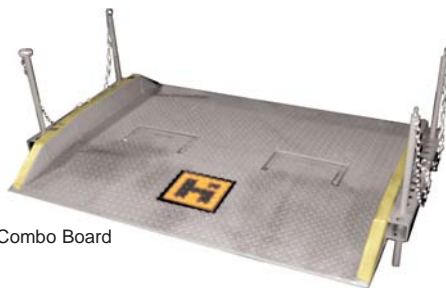
Model Number	Size		Ht. Diff.		Weight (Lbs.)	Stock Item
	Width	Length	W/Fk.	Lft.		
15,000 Lbs. Capacity						
15STB-6048	60"	48"	7"		455	X
15STB-6060	60"	60"	9"		565	X
15STB-6072	60"	72"	11"		645	X
15STB-7248	72"	48"	7"		510	
15STB-7260	72"	60"	9"		640	
15STB-7272	72"	72"	11"		735	
20,000 Lbs. Capacity						
20STB-6048	60"	48"	7"		505	X
20STB-6060	60"	60"	9"		620	X
20STB-6072	60"	72"	11"		715	X
20STB-7248	72"	48"	7"		580	
20STB-7260	72"	60"	9"		730	
20STB-7272	72"	72"	11"		825	



15STB Steel Truck Board with Locking Pins and Lift Loops

Features

- 15,000 and 20,000 capacities
- Widths 60" and 72"
- Lengths from 48" to 72"
- Custom sizes available on special order
- Lift loops are standard for safe, easy placement
- Durability of all steel construction
- Diamond plate is used for positive traction and safety
- Locking pins allow variable positioning conditions to be met with safety in mind
- Beveled edges for easy loading and unloading



15SC Steel Truck Combo Board

Features

- 15,000 and 20,000 capacities
- Widths 60" and 72"
- Standard lengths from 48" to 84"
- Lift loops are standard for safe, easy placement
- Durability of all steel construction
- Diamond plate is used for positive traction and safety
- Safely handles trucks that park at a slight angle to the dock or simply cannot park tight against the dock
- Locking pins allow variable positioning conditions to be met with safety in mind
- Beveled edges for easy loading and unloading

Steel Truck Combo Dock Boards

Model Number	Size		Ht. Diff.		Weight (Lbs.)	Stock Item
	Width	Length	W/Fk.	Lft.		
15,000 Lbs. Capacity						
15SC-6048	60"	48"	7"		455	
15SC-6060	60"	60"	9"		565	
15SC-6072	60"	72"	11"		645	
15SC-7248	72"	48"	7"		510	
15SC-7260	72"	60"	9"		640	X
15SC-7272	72"	72"	11"		735	X
15SC-7284	72"	84"	13"		735	
20,000 Lbs. Capacity						
20SC-6048	60"	48"	7"		505	
20SC-6060	60"	60"	9"		620	
20SC-6072	60"	72"	11"		715	
20SC-7248	72"	48"	7"		580	
20SC-7260	72"	60"	9"		730	
20SC-7272	72"	72"	11"		825	
20SC-7284	72"	84"	13"		825	

Dock Plate and Dock Board Sizing

Dock board and dock plate width is determined by the size of equipment used to load and unload and the width of the largest load. When in doubt, choose the wider board or plate to ensure safer operation. Side curbs reduce the useable width of boards and must be considered in choosing the correct width.

Dock board and dock plate length is determined by the desired maximum slope of the ramp into and out of the truck from the dock. Each type of equipment used has characteristics to consider relative to the maximum desired slope:

- Hand Pallet Trucks: Max. Slope: 6%
- Electric Fork Trucks: Max. Slope: 10%
- Gas Fork Trucks: Max Slope: 15%

Determining Dock Board or Dock Plate

Consult the table below to determine the correct truck dock board or dock plate and correct capacity to use based upon the equipment to be used in loading and unloading:

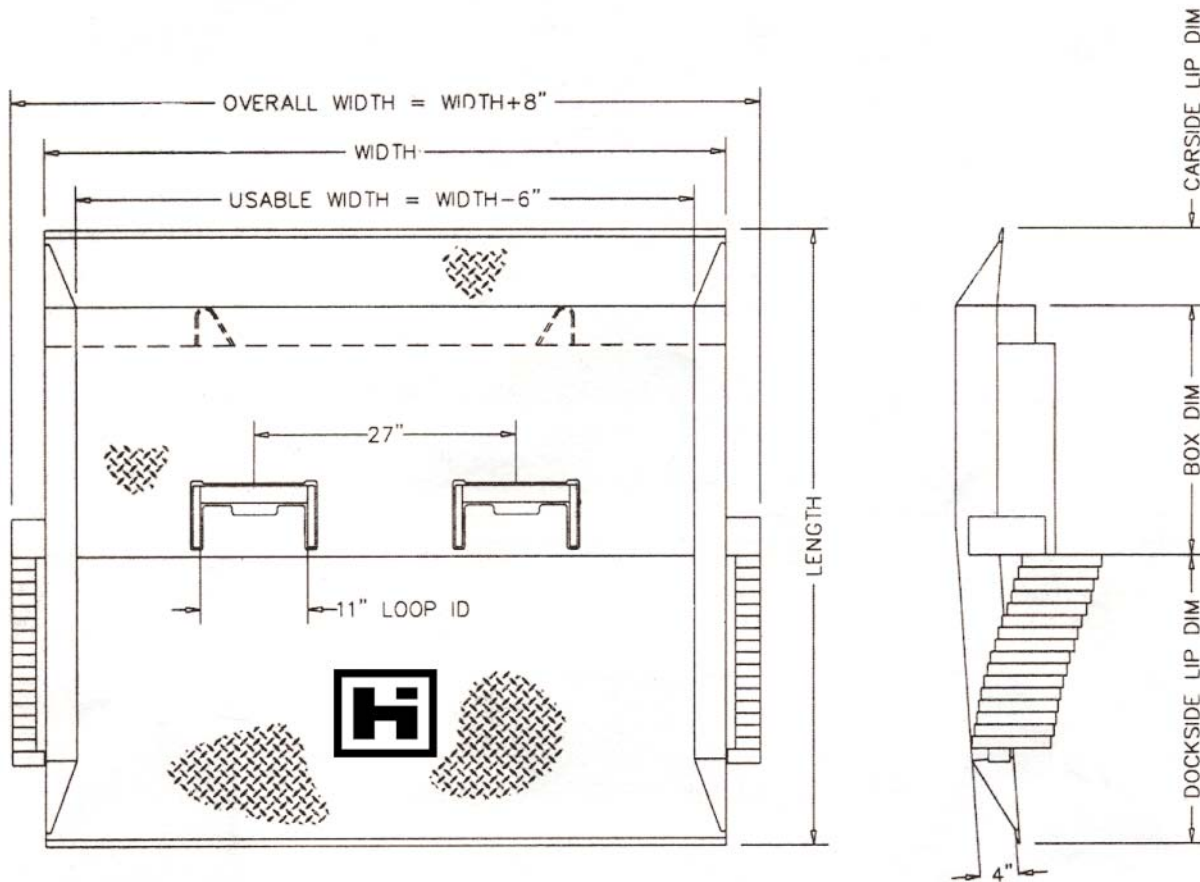
DOCK BOARD AND DOCK PLATE SELECTION		
<u>Equipment Used</u>	<u>Type of Board or Plate</u>	<u>Capacity of Board or Plate</u>
Foot Traffic, Hand Truck or Pallet Truck	Aluminum Plate or Aluminum Board with Side Curbs	(Operator, Equipment + Load) x 2
Four Wheeled Forklift or Powered Walkie Pallet Truck	Aluminum Board with Side Curbs or Any Steel Truck Board (Locking Leg, 2-Pin Or 4-Pin)	Fork Lift Capacity x 3
Three Wheeled Forklift	Any Steel Truck Board (Locking Leg, 2-Pin or 4-Pin)	Fork Lift Capacity x 4.5

CHOOSING TRUCK DOCK BOARD & DOCK PLATE SIZE		
<u>Equipment Used</u>	<u>Board Width</u> (at least 12"-18" wider than the widest load or fork truck)	<u>Board Length</u> (long enough to minimize steepness of incline into the truck)
Foot Traffic, Hand Trucks and Hand Pallet Trucks	36" or 48" for Pedestrian Traffic; 48" for Hand Pallet Trucks	Approx. 9" Per Inch of Height Difference - Dock Surface to Trailer Floor (Usual Minimum Length: 36")
Three Wheeled and Four Wheeled Fork Lift	Recommended Minimum: 60" Note: Most Popular Widths: Plates: 36" & 48" Boards: 60" & 72"	Approx. 7" - 8" Per Inch of Height Difference - Dock Surface to Trailer Floor (Usual Minimum Length: 36") Note: Most Popular Lengths: Plates: 36", 48" & 60" Boards: 48", 60" & 72"

Dock Plate and Dock Board Comparison

The table below describes the advantages and disadvantages of each type dock board and dock plate as pertaining to the use of the products:

ADVANTAGES AND DISADVANTAGES OF DOCK BOARDS AND DOCK PLATES		
<u>Type of Board/Plate</u>	<u>Advantages</u>	<u>Disadvantages</u>
Aluminum Dock Plate	Light Weight Usually Moved by Hand Relatively Inexpensive	Damages Easily if Overloaded Not Suitable for Motorized Traffic
Aluminum Dock Board	Relatively Light Weight Moved by Hand/Lifting Chains Higher Capacity Than Plates	Bends Readily if Overloaded or Hit May Shift With Heavy Use
2-Pin Steel Truck Board	Stronger than Aluminum Units Greater Longevity than Aluminum Pins Securely Lock Against Trailer Lays Flat on Dock when Idle	Heavy, Requires Fork Lift to Move Unsuitable for Truck Angle Parked
4-Pin Steel Truck Board	Suitable for Truck Angle Parked Greater Longevity than Aluminum Best Board for OTR Trailers Lays Flat on Dock when Idle	Heavy, Requires Fork Lift to Move Requires Time to set Locking Pins



- Built to your specifications
- Provides a firm, solid bridge between railcar and dock
- Constructed from high strength steel for durability
- Capacities from 15,000 lbs up to 100,000 lbs (Usual capacities of 25,000 lbs. and 40,000 lbs.)
- Widths from 70" to 114" plus additional flare as desired (Usual widths of 70", 82", 92" and 114")
- Lengths from 32" to 84" - depending upon application

Features

- Lift loops are standard for safe and easy placement by forklifts
- Safety side curbs reduce risk of forklift runoff
- Beveled edges for easy loading and unloading
- Diamond plate is for positive traction and safety
- Welded box understructure design for strength and security
- Automatic space lock system for secure locking of board in position

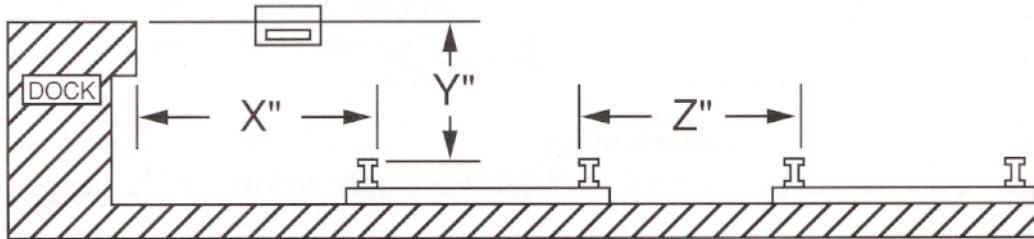


40SR92107-30 Flared Steel Rail Board

RAIL DOCK BOARD WORKSHEET

Each rail dock board is manufactured for a specific application. This worksheet must be submitted complete with all orders for rail dock boards. Please photocopy this worksheet and fax in for a quotation or for placing an order.

- _____ Type of Rail Car to be Serviced (Boxcar, Refer, Hi-Cube, D.F., All Door Car, Flat Car, Etc.)
- _____ (X1) Distance from inside of rail to dock. Measure 2 locations 20 ft. away from the center of the
- _____ (X2) dock board position. Take the same measurements in all locations where the rail dock board to be used. For a long open dock measure every 20 ft.
- _____ (Y1) Height from the top of the rail to the top of the dock. Use a line level and string measuring
- _____ (Y2) at every dock board location. (Z) Dimension is the distance between inside of adjacent rails. The board length must be adequate to span the maximum dock-to-car or car-to-car distance and must achieve the required height differential at an acceptable grade.



- _____ Narrowest Rail Car Door to be Serviced (Generally Ranges from 6 ft. to 20 ft.)
- _____ Narrowest Opening the Rail Board Must Pass Through
- _____ Desired Dock Board Width. The dock board width should be 2 in. to 4 in. narrower than the minimum car door opening width encountered at this site and 12 in. less than the dock door opening. (**Usable Width** = "Board Width" minus 6 in. **Overall Width** = Board Width plus 8 in.)
- _____ Desired Dock Board Flair (10%, 20%, 30%). Flair provides a dockside lip of greater width than the carside lip. Flare allows greater turning room, safer operation and reduces tire wear.
- _____ Truck to be Used to Service the Rail Car (Type of Fork Lift Attachment to be Used _____)
- _____ Rail Board Capacity Desired (Fork Lift Capacity _____; Fork Lift & Attachment Weight _____)
- _____ Is the face of the dock square? If not describe _____
- _____ Are there dock projections within 10 in. of the top of the dock surface? If so describe. (This will affect the length of the dock board.) Look for anything that will keep the automatic lock from working. _____

If dock board is to be used at more than one location, measure and complete a worksheet for each location.

Date Submitted _____
 Dealer Name _____
 City/State _____

Salesperson _____
 Phone _____
 Fax _____

Photo copy this worksheet, complete the worksheet and fax to: 414-453-9975

Steel Yard Ramps

Model Number	Length	Useable Width	Overall Width	Weight (Lbs.)
16,000 Lbs. Capacity Steel Yardramps				
H-S16YR-7030	30 ft.	64"	70"	4,159
H-S16YR-7036	36 ft.	64"	70"	5,102
H-S16YR-8430	30 ft.	78"	84"	4,964
H-S16YR-8436	36 ft.	78"	84"	5,828
20,000 Lbs. Capacity Steel Yardramps				
H-S20YR-7030	30 ft.	64"	70"	3,484
H-S20YR-7036	36 ft.	64"	70"	5,327
H-S20YR-8430	30 ft.	78"	84"	5,189
H-S20YR-8436	36 ft.	78"	84"	6,048
25,000 Lbs. Capacity Steel Yardramps				
H-S25YR-7030	30 ft.	64"	70"	4,780
H-S25YR-7036	36 ft.	64"	70"	5,762
H-S25YR-8430	30 ft.	78"	84"	5,605
H-S25YR-8436	36 ft.	78"	84"	6,544
30,000 Lbs. Capacity Steel Yardramps				
H-S30YR-7030	30 ft.	64"	70"	5,030
H-S30YR-7036	36 ft.	64"	70"	6,020
H-S30YR-8430	30 ft.	78"	84"	5,905
H-S30YR-8436	36 ft.	78"	84"	6,840

Aluminum Yard Ramps

Model Number	Length	Useable Width	Overall Width	Weight (Lbs.)
16,000 Lbs. Capacity Aluminum Yardramps				
H-A16YR-7030	30 ft.	64"	70"	2700
H-A16YR-7036	36 ft.	64"	70"	3250
H-A16YR-8430	30 ft.	78"	84"	3050
H-A16YR-8436	36 ft.	78"	84"	3560
20,000 Lbs. Capacity Aluminum Yardramps				
H-A20YR-7030	30 ft.	64"	70"	2800
H-A20YR-7036	36 ft.	64"	70"	3350
H-A20YR-8430	30 ft.	78"	84"	3150
H-A20YR-8436	36 ft.	78"	84"	3700
25,000 Lbs. Capacity Aluminum Yardramps				
H-A25YR-7030	30 ft.	64"	70"	2850
H-A25YR-7036	36 ft.	64"	70"	3400
H-A25YR-8430	30 ft.	78"	84"	3200
H-A25YR-8436	36 ft.	78"	84"	3750
30,000 Lbs. Capacity Aluminum Yardramps				
H-A30YR-7030	30 ft.	64"	70"	2900
H-A30YR-7036	36 ft.	64"	70"	3450
H-A30YR-8430	30 ft.	78"	84"	3250
H-A30YR-8436	36 ft.	78"	84"	3800

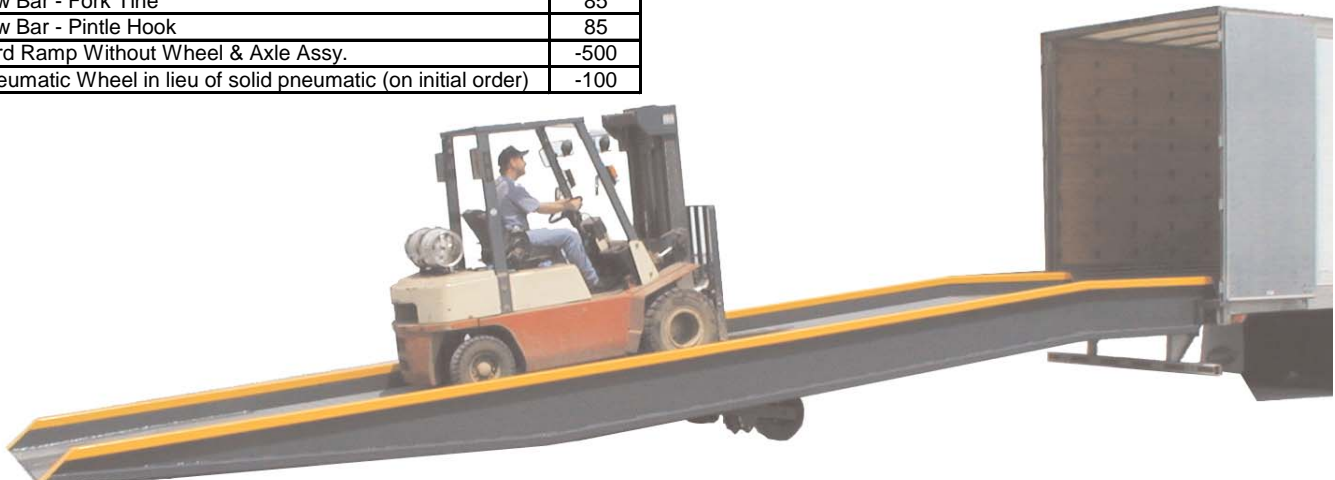
Yardramp Options	
Tow Bar - Fork Tine	85
Tow Bar - Pintle Hook	85
Yard Ramp Without Wheel & Axle Assy.	-500
Pneumatic Wheel in lieu of solid pneumatic (on initial order)	-100

Features

- Portable yard ramps 30 feet long are for dock to ground applications and 36 feet long are for truck to ground applications
- Serrated traction grating has an open design to prevent build up of debris or snow while providing excellent traction
- Standard safety chains hold the yard ramp securely to the dock or trailer
- Heavy-duty side curbs provide strength and contain forklift traffic on the ramp
- Standard overall widths available include 70" and 84" on aluminum and steel. Standard lengths include 30' and 36' (36' length includes a 6' level-off for fork truck maneuverability). Standard capacities are from 16,000 lbs. to 30,000 lbs.
- Vertical travel on standard units ranges from approximately 3' to 6' depending upon deck length
- Inside measurement on aluminum yard ramps is approximately 9" less than the outside dimension, steel yard ramps have an inside dimension approximately 6" less - the width selected should be at least 15" wider than the widest equipment to be used on the ramp
- Included as standard is your choice of a fork tine tow bar or a pintle hook tow bar
- Molded-on rubber wheels are standard on aluminum models and pneumatic-shaped solid tires are standard on steel models

Specials Are Available:

- Level-offs up to 12 feet in length
- Overall width up to 102"
- Lengths up to 42 feet
- Ramps 36 feet long with no level off
- Capacities over 30,000 lbs



Aluminum Walk Ramps

Model Number	Size		Height Range		Capacity (Lbs.)	Weight (Lbs.)
	Width	Length	Minimum	Maximum		
Walk Ramp With Level-Off						
WR28-6-C	28"	6	6"	21"	2,000	62
WR28-7-C	28"	7	6"	25"	1,800	72
WR28-8-C	28"	8	6"	29"	1,800	82
WR28-9-C	28"	9	6"	33"	1,650	92
WR28-10-C	28"	10	6"	38"	1,500	102
WR28-12-C	28"	12	6"	46"	1,400	122
WR28-14-C	28"	14	6"	54"	1,200	142
WR28-16-C	28"	16	6"	62"	1,000	162
WR38-6-C	38"	6	6"	21"	2,000	80
WR38-7-C	38"	7	6"	25"	1,800	92
WR38-8-C	38"	8	6"	29"	1,800	105
WR38-9-C	38"	9	6"	33"	1,650	117
WR38-10-C	38"	10	6"	38"	1,500	130
WR38-12-C	38"	12	6"	46"	1,400	155
WR38-14-C	38"	14	6"	54"	1,200	180
WR38-16-C	38"	16	6"	62"	1,000	205
Walk Ramp With Hook Mounting						
WR26-6-H	26"	6	6"	21"	2,000	61
WR26-7-H	26"	7	6"	25"	1,800	70
WR26-8-H	26"	8	6"	29"	1,800	80
WR26-9-H	26"	9	6"	33"	1,650	89
AWR26-10-H	26"	10	6"	38"	1,500	99
AWR26-12-H	26"	12	6"	46"	1,400	117
AWR26-14-H	26"	14	6"	54"	1,200	137
AWR26-16-H	26"	16	6"	62"	1,000	155
AWR28-6-H	28"	6	6"	21"	2,000	62
AWR28-7-H	28"	7	6"	25"	1,800	72
AWR28-8-H	28"	8	6"	29"	1,800	82
AWR28-9-H	28"	9	6"	33"	1,650	92
AWR28-10-H	28"	10	6"	38"	1,500	102
AWR28-12-H	28"	12	6"	46"	1,400	122
AWR28-14-H	28"	14	6"	54"	1,200	142
AWR28-16-H	28"	16	6"	62"	1,000	162
AWR38-6-H	38"	6	6"	21"	2,000	80
AWR38-7-H	38"	7	6"	25"	1,800	92
AWR38-8-H	38"	8	6"	29"	1,800	105
AWR38-9-H	38"	9	6"	33"	1,650	117
AWR38-10-H	38"	10	6"	38"	1,500	130
AWR38-12-H	38"	12	6"	46"	1,400	155
AWR38-14-H	38"	14	6"	54"	1,200	180
AWR38-16-H	38"	16	6"	62"	1,000	205



AWR28-10-C Aluminum Walk Ramp

Features

- Portable lightweight aluminum walk ramps carried in delivery trucks speed unloading
- Side curbs safely retain loaded hand trucks within the ramp
- Provides for truck loading and unloading by hand trucks when dock access is not possible
- Serrated ramp deck ensures safe footing during loading and unloading operations
- Level-off style overlapping truck bed is secured by 18" long chains for safe connection with truck
- Steel hook style units lock onto the truck bed for flush direct entry into the truck
- Designed for 20% to 36% grades for use with two- and four-wheeled hand and floor trucks
- Widths of 26 in., 28 in. and 38 in. available
- Lengths to 16 ft. available
- Capacities to 2000 lbs, available

Aluminum Curb Ramps

Model Number	Size		Capacity (Lbs.)	Weight (Lbs.)
	Width	Length		
Light Duty Curb Ramps				
CR-L-2618	26"	18"	500	7
CR-L-2727	27"	27"	500	11
Heavy Duty Curb Ramps				
CR-H-2618	26"	18"	750	10
CR-H-2727	27"	27"	750	17

Features

- Used to move heavy hand truck loads over curbs easily and safely
- For hand truck traffic only
- Lightweight, durable and strong for years of use
- Non-skid surface provides secure footing
- Cut-out handle for ease of handling
- Heavy duty 750 lbs. capacity and light duty 500 lbs. capacity units available



CR-H-2727 Aluminum Curb Ramp

Pallet Pullers

Model Number	Description	Weight (Lbs.)	Stock Item
PP-1	Single Scissor	12	X
PP-2	Double Scissor	20	X

Features

- Trailers can be safely unloaded from the dock by forklifts too heavy to enter the trailer
- Allows quick unloading of palletized materials from trailers at ground level
- Not designed for vertical lifting
- Pull chains available up to 50' long



PP-1 Pallet Puller

Wheel Risers

Model Number	Height	Width	Length		Weight (Lbs.)
			Overall	Incline	
Steel Risers (40,000 Lbs. Capacity per Pair)					
SWR24-6-48	6"	24"	48"	30"	396
SWR24-6-102	6"	24"	102"	84"	780
SWR24-8-54	8"	24"	54"	30"	502
SWR24-8-108	8"	24"	108"	84"	936
SWR24-10-60	10"	24"	60"	30"	640
SWR24-10-114	10"	24"	114"	84"	1124
SWR24-10-66	12"	24"	66"	30"	772
SWR24-10-120	12"	24"	120"	84"	1288
Aluminum Risers (30,000 Lbs. Capacity per Pair)					
AWR24-6-48	6"	24"	48"	30"	158
AWR24-6-102	6"	24"	102"	84"	312
AWR24-8-54	8"	24"	54"	30"	200
AWR24-8-108	8"	24"	108"	84"	374
AWR24-10-60	10"	24"	60"	30"	354
AWR24-10-114	10"	24"	114"	84"	448
AWR24-10-66	12"	24"	66"	30"	408
AWR24-10-120	12"	24"	120"	84"	514



SWR24-6-48 Aluminum Wheel Riser

Features

- Portable wheel risers raise vehicles closer to dock height for efficient loading
- Cost-effective solution to high docks and low trailers
- Beveled entry edge for easy entry and exit and protects tires from damage
- Select height by adding 2" to height of dock from ground and subtract truck bed height
- Select overall length based upon the ramp angle that your loaded vehicles can negotiate easily. (For single axle trucks use top length of 30". For tandem axle trucks use top length of 84".)



H-MVR-S Mechanical Truck Restraint

Truck Restraints

Model Number	Signs Lights		Weight (Lbs.)
	Mechanical Restraints		
H-MVR-S	YES	NO	180
H-MVR-SL	YES	YES	200
Electric Restraints			
H-EVR-SL	YES	YES	315



H-EVR-SL Electric Truck Restraint

Mechanical Truck Restraint Features

- Semi-automatic unit provides in excess of 50,000 lbs. restraining force
- Non-impact operation - captures and holds all legal I.C.C. bars - floats up and down with trailer action
- Wide 12" to 30" vertical operating range
- Exclusive pivoting hook allows for debris or snow removal to within 4" of dock face - low maintenance
- Complete inside/outside sign package included
- Approximately one hour installation time using bolt hole pattern designed for optimal holding force
- Optional manual light package available

Electric Truck Restraint Features

- Automatic push button control for ease of operation
- Operates on fully enclosed 115 volt single phase motor
- Non-impact design compensates for ICC bar position over a wide 12" to 30" operating range
- Automatic operation provides in excess of 50,000 lbs. restraining force while positive contact hook floats up or down with truck action
- Includes complete inside/outside visual communication package for safe operation
- Bolt hole pattern for ground and wall mount installation provides maximum strength and holding force
- Operating system is self-contained and fully enclosed for protection from debris and the elements - periodic chain lubrication is the only maintenance required

Dock Lifts

Model Number	Capacity (Lbs.)	Lowered Height	Raised Height	Standard Platform W x L	Split Entry Plate W x L	Base Size	Stand. H.P.	Standard Power	Approx. Rise Time (Sec.)	Weight (Lbs.)
Loading Dock Series (72" x 96" Platform)										
LD5-7296	5,000	9"	68"	72" x 96"	68" x 18"	67" x 92"	1	115/1/60	100	2,280
LD6-7296	6,000	10"	69"	72" x 96"	68" x 18"	67" x 92"	1	115/1/60	120	2,400
LD8-7296	8,000	14"	73"	72" x 96"	68" x 18"	67" x 93"	3	220-575/3 phase	55	3,250
LD10-7296	10,000	14"	73"	72" x 96"	68" x 18"	67" x 93"	3	220-575/3 phase	70	3,800
LD15-7296	15,000	14"	73"	72" x 96"	68" x 18"	68" x 93"	5	220-575/3 phase	56	4,200
LD20-7296	20,000	18"	77"	72" x 96"	68" x 18"	68" x 93"	7.5	220-575/3 phase	50	5,400
LD25-7296	25,000	20"	79"	72" x 96"	68" x 18"	68" x 93"	10	220-575/3 phase	54	6,050
Loading Dock Series (72" x 120" Platform)										
LD5-72120	5,000	9"	68"	72" x 120"	68" x 18"	67" x 92"	1	115/1/60	100	2,400
LD6-72120	6,000	10"	69"	72" x 120"	68" x 18"	67" x 92"	1	115/1/60	120	2,500
LD8-72120	8,000	14"	73"	72" x 120"	68" x 18"	67" x 93"	3	220-575/3 phase	55	3,400
LD10-72120	10,000	14"	73"	72" x 120"	68" x 18"	67" x 93"	3	220-575/3 phase	70	4,000
LD15-72120	15,000	14"	73"	72" x 120"	68" x 18"	68" x 114"	5	220-575/3 phase	56	5,200
LD20-72120	20,000	18"	77"	72" x 120"	68" x 18"	68" x 114"	7.5	220-575/3 phase	50	6,400
LD25-72120	25,000	20"	79"	72" x 120"	68" x 18"	68" x 114"	10	220-575/3 phase	54	8,200
Loading Dock Series (72" x 144" Platform)										
LD12-72144	12,000	14"	73"	72" x 144"	68" x 18"	68" x 138"	5	220-575/3 phase	54	5,800
LD15-72144	15,000	14"	73"	72" x 144"	68" x 18"	68" x 138"	5	220-575/3 phase	56	6,200
LD20-72144	20,000	18"	77"	72" x 144"	68" x 18"	68" x 138"	7.5	220-575/3 phase	20	7,400
LD25-72144	25,000	25"	84"	72" x 144"	68" x 18"	68" x 138"	10	220-575/3 phase	54	9,000
Loading Dock Series (96" x 96" Platform)										
LD5-9696	5,000	9"	68"	96" x 96"	68" x 18"	68" x 93"	1	115/1/60	100	2,500
LD6-9696	6,000	10"	69"	96" x 96"	68" x 18"	68" x 93"	1	115/1/60	120	2,600
LD8-9696	8,000	14"	73"	96" x 96"	68" x 18"	68" x 93"	3	220-575/3 phase	55	3,370
LD10-9696	10,000	14"	73"	96" x 96"	68" x 18"	68" x 93"	3	220-575/3 phase	70	3,800
LD15-9696	15,000	14"	73"	96" x 96"	68" x 18"	89" x 93"	5	220-575/3 phase	56	4,390
LD20-9696	20,000	18"	77"	96" x 96"	68" x 18"	89" x 93"	7.5	220-575/3 phase	50	5,700
LD25-9696	25,000	20"	79"	96" x 96"	68" x 18"	89" x 93"	10	220-575/3 phase	54	7,100
Loading Dock Series (96" x 120" Platform)										
LD5-96120	5,000	9"	68"	96" x 120"	68" x 18"	68" x 93"	1	115/1/60	100	2,680
LD6-96120	6,000	10"	69"	96" x 120"	68" x 18"	68" x 93"	1	115/1/60	120	2,900
LD8-96120	8,000	14"	73"	96" x 120"	68" x 18"	68" x 93"	3	220-575/3 phase	55	3,815
LD10-96120	10,000	14"	73"	96" x 120"	68" x 18"	68" x 93"	3	220-575/3 phase	70	4,200
LD15-96120	15,000	14"	73"	96" x 120"	68" x 18"	89" x 114"	5	220-575/3 phase	56	5,600
LD20-96120	20,000	18"	77"	96" x 120"	68" x 18"	89" x 114"	7.5	220-575/3 phase	50	6,800
LD25-96120	25,000	20"	79"	96" x 120"	68" x 18"	89" x 114"	10	220-575/3 phase	54	8,700
Loading Dock Series (96" x 144" Platform)										
LD12-96144	12,000	14"	73"	96" x 144"	68" x 18"	89" x 138"	5	220-575/3 phase	54	6,200
LD15-96144	15,000	14"	73"	96" x 144"	68" x 18"	89" x 138"	5	220-575/3 phase	56	6,600
LD20-96144	20,000	18"	77"	96" x 144"	68" x 18"	89" x 138"	7.5	220-575/3 phase	20	7,600
LD25-96144	25,000	25"	84"	96" x 144"	68" x 18"	89" x 138"	10	220-575/3 phase	54	9,400
Low Profile Loading Dock Series (72" x 96" Platform)										
LPLD5-7296	5,000	6"	54"	72" x 96"	68" x 18"	72" x 96"	1	115/1/60	100	2,800

Features

- 18" x 68" split entry plate complete with lifting chains
- Checkered tread plate platform surface
- Up travel limit switch is standard on all dock lifts
- Push button control
- Removable guard rails are included on all dock lifts
- Lifting lugs make initial placement much more convenient
- Standard power packs to 10 H.P. depending on size and capacity
- A maintenance strut is provided with all dock lifts to facilitate safe servicing

Dock Lift Options

Push button mounted on a post on the platform	
Electric trip bars, four sides of platform, weatherproof	
Wall bracket for power pack mounting	- for 1 hp.
	- for 3 hp.
	- for 5 hp.
Hydraulic hose length per foot over 15'	
Electric cable length per foot over 15'	
Mechanical pop-up stop, 6" wide x 68" long	
Chains with snap hooks, per end	
Tapered toe guards, 8" wide	
1-phase power to 3-phase power	
1-hp to 3-hp	
1-hp to 5-hp	
1-hp to 7.5-hp	
1-hp to 10-hp	
Split entry plates over 32" long	
Power packs include oil, electrical panel and push button control	



LD5-7296 Dock Lift

Hydraulic Pit Levelers

Model Number	Overall Width	Overall Length	Weight (Lbs.)
25,000 Lbs. Capacity			
H-HD600625	6'	6'	1,605
H-HD600825	6'	8'	1,785
H-HD601025	6'	10'	2,012
H-HD650625	6' 6"	6'	1,672
H-HD650825	6' 6"	8'	1,860
H-HD700625	7'	6'	1,690
H-HD700825	7'	8'	2,114
H-HD701025	7'	10'	2,124
35,000 Lbs. Capacity			
H-HD600635	6'	6'	1,658
H-HD600835	6'	8'	1,940
H-HD601035	6'	10'	2,061
H-HD650635	6' 6"	6'	1,732
H-HD650835	6' 6"	8'	1,940
H-HD700635	7'	6'	1,750
H-HD700835	7'	8'	2,164
H-HD701035	7'	10'	2,184



H-HD Hydraulic Pit Leveler

Features

- Operating range 12" above and 12" below dock level
- Solid steel "C" channel deck support - provides 39% greater resistance to elastic bending moments than other industry designs
- Unique base frame support struts make this leveler the strongest and safest in the industry
- Power operation in single phase (115 to 230 volts) or three phase (208 to 460 volts)
- Standard capacities available to 45,000 lbs. dynamic capacity
- Continuous hinge design with grease fittings provides for long life
- Lip keepers serve as night locks for safety and provide safe cross-traffic support
- Two heavy duty bumpers, a maintenance strut and working range toe guards are standard
- Inline safety stop guards against free-fall in the event of premature truck departure
- High strength 55,000 lb. minimum yield steel deck and lip

Mechanical Pit Levelers

Model Number	Overall Width	Overall Length	Weight (Lbs.)
25,000 Lbs. Capacity			
H-MD600625	6'	6'	1,370
H-MD600825	6'	8'	1,655
H-MD601025	6'	10'	1,944
H-MD650625	6' 6"	6'	1,750
H-MD650825	6' 6"	8'	2,020
H-MD700625	7'	6'	1,510
H-MD700825	7'	8'	1,810
H-MD701025	7'	10'	2,675
35,000 Lbs. Capacity			
H-MD600835	6'	8'	1,695
H-MD601035	6'	10'	2,455
H-MD650835	6' 6"	8'	2,225
H-MD700635	7'	6'	1,854
H-MD700835	7'	8'	2,289
H-MD701035	7'	10'	2,739



H-MD700825 Mechanical Pit Leveler

Features

- Operating range 12" above and 12" below dock level
- Solid steel "C" channel deck support - provides 39% greater resistance to elastic bending moments than other industry designs
- Positive adjustable hold-down device allows up and down float when in service
- High strength 55,000 lb. minimum yield steel deck and lip
- Continuous hinge design with grease fittings provide for long life
- Direct extension spring counter-balance system with no moving parts
- Fully mechanical, single-handed pull-chain operation - no lifting or straining
- Dual cross traffic safety legs
- Two heavy duty bumpers, a maintenance strut and working range toe guards are standard
- Standard capacities available to 45,000 lbs. dynamic capacity

Pit Leveler Options

18" Lip With Lip Assist (Mechanical)	58 lbs.
20" Lip With Lip Assist (Mechanical)	78 lbs.
18" Lip (Hydraulic)	40 lbs.
20" Lip (Hydraulic)	40 lbs.
3-Sides Weather Seals	10 lbs.
Telescopic Toe Guards - 6' & 8' Models	55 lbs.
Telescopic Toe Guards - 10' Models	70 lbs.
Pour-In Pan - 6' Models	270 lbs.
Pour-In Pan - 8' Models	350 lbs.
Pour-In Pan - 10' Models	430 lbs.
Curb Angles - 6' x 6'	140 lbs.
Curb Angles - 6' x 8'	160 lbs.
Curb Angles - 6' x 10'	180 lbs.
Curb Angles - 7' x 6'	150 lbs.
Curb Angles - 7' x 8'	170 lbs.
Curb Angles - 7' x 10'	190 lbs.
Mechanical Below Dock (Hydraulic)	-
208/220/460/575 3 Phase Power Pack	-

Type of Load Being Handled

Heavier volumes of traffic and heavier load weights are best served by higher capacity levelers. Cost of the leveler is always a consideration, but the long-term cost of ownership is the primary issue. As a result, a lower cost leveler shouldn't be used if it is not adequate when considering the duty cycle involved. The higher the quality and load capacity of the leveler, the longer it will last.

Dock Leveler Capacity

- What is the configuration (number, size and arrangement of wheels - a three wheeled forklift concentrates the load) and the gross weight of the loading vehicle?
- What is the gross weight of the heaviest load carried?
- What is the maximum height difference between the truck bed and the dock?
- At what speed is the fork truck or other loading vehicle traveling?

- What is the frequency of use (shifts per day; trucks per shift)?

Use the following formula in determining the base capacity:

Add the weight of the load to the gross weight of the vehicle and multiply by two. (Example: 4,000 lbs. load + 8,000 lbs. forklift weight = 12,000 lbs. X 2 = 24,000 lbs. or a 25,000 lbs. capacity unit.)

This formula will work in most cases up to a 7% grade, less than 5 MPH forklift speed and no more than 8 trucks per day and a maximum of 20 rollover cycles per vehicle. If these parameters are exceeded, the next higher capacity leveler should be used.

Pit Leveler Sizing

Nominal Size W x L	Actual Leveler		Pit Dimensions		Working Range		
	With Lip Extended W x L	Size Lip Retracted W x L	Depth		Up	Down	
			Rear	Front			
6' x 6'	6' x 6'6"	72" x 63"	74" x 63"	19.5"	20"	8"	12"
6' x 8'	6' x 8'6"	72" x 87"	74" x 87"	19.5"	20"	12"	12"
6' x 10'	6' x 10'6"	72" x 111"	74" x 111"	23.5"	24"	12"	16"
6.5' x 6'	6.5' x 6'6"	78" x 63"	80" x 63"	19.5"	20"	8"	12"
6.5' x 8'	6.5' x 8'6"	78" x 87"	80" x 87"	19.5"	20"	12"	12"
6.5' x 10'	6.5' x 10'6"	78" x 111"	80" x 111"	23.5"	24"	12" - 16"	16"
7' x 6'	7' x 6'6"	83" x 63"	85" x 63"	19.5"	20"	8"	12"
7' x 8'	7' x 8'6"	83" x 87"	85" x 87"	19.5"	20"	12"	12"
7' x 10'	7' x 10'6"	83" x 111"	85" x 111"	23.5"	24"	12" - 16"	16"

* For 10' long hydraulic levelers, the up and down working range is 16". For 10' mechanical levelers, a 16" up working range is available as an option by adding a longer upper bar to the leveler.

Width of a Pit Leveler

Most trailers to be serviced will be limited to an overall width of 8'6". The dock leveler widths available from Handle-It™ range from 72" to 84".

Length of a Pit Leveler

A pit leveler is used when the dock to truck height difference is greater than 5" ± and there is available space for the longer leveler. The longer the leveler is, the less impact that will occur due to a gentler slope, which means longer leveler life. The leveler length will be determined by the available space and the height difference between the dock and the trucks being serviced. As a general rule the tables on the left can be used to determine leveler length. Typical truck and trailer heights are:

- Flatbed Truck 48" - 60"
- Semi-Trailer 44" - 52"
- High Cube Truck 36" - 42"
- Straight Truck 36" - 48"

Typical Minimum Dock Leveler Lengths

Height Differential Truck to Dock	Leveler Length		Leveler Length		Leveler Length	
	Maximum Grade	Maximum Grade	Maximum Grade	Maximum Grade	Maximum Grade	Maximum Grade
	Electric Pallet Truck Operation (Max. Grade: 10%)		Electric Fork Truck Operation (Max. Grade: 10%)		Gas Fork Truck Operation (Max. Grade: 15%)	
1" - 2"	6'	3.3%	6'	3.3%	6'	3.3%
3" - 4"	6'	6.7%	6'	6.7%	6'	6.7%
5" - 6"	6'	10.0%	6'	10.0%	6'	10.0%
7" - 8"	8'	9.6%	8'	9.6%	6'	13.3%
9" - 10"	10'	9.2%	10'	9.2%	8'	12.0%
11" - 12"	N/A	N/A	N/A	N/A	8'	14.3%
13" - 14"	N/A	N/A	N/A	N/A	10'	13.0%
15" - 16"	N/A	N/A	N/A	N/A	10'	14.8%

Mechanical vs. Hydraulic Pit Levelers

Mechanical pit levelers, while being slightly less expensive than hydraulic units to buy and install, require periodic adjustment, raising the cost of ownership. Hydraulic units tend to have a longer life with less maintenance due to smoother automatic operation. All Handle-It™ power packs and electrical wiring are UL approved.

Installation

A professional installer should be used to install edge-of-dock levelers and pit levelers in accordance with installation instructions provided with each Handle-It™ unit. Safety should be a primary concern, and a professional installer is the best assurance of safety.

POLICIES

Sales Policies

MII Equipment, Inc. prices are subject to change without notice. MII Equipment, Inc. also reserves the right to alter product specifications, designs and shipping weight without notice. Customer service staff is available to provide written quotations for all products upon request.

Credit Policy

Standard terms of payment are net 30 days from day of invoice with approved credit. Terms for specially designed products are 1/3 non-refundable payment with the order and 2/3 payment net 30 days from date of invoice. New distributors are required to use a valid credit card or prepay their first order prior to shipment. MII Equipment, Inc. will not release any orders to distributors who have outstanding balances over 60 days from invoice date. MII Equipment, Inc. reserves the right to charge a 1-1/2 % per month charge on outstanding balances over 30 days from invoice date.

Shipping Policy

All products are shipped F.O.B. Factory or Milwaukee Warehouse. Freight charges will be "Third Party Billed" by the carrier, unless freight collect is specified. Parts orders weighing 70 lbs. or less will ship UPS ground, pre-pay & add, unless otherwise requested. Parts orders greater than 70 lbs. will be shipped common carrier. Published shipping weights may fluctuate due to options and/or packing material. MII Equipment, Inc. reserves the right to add a handling charge to all parts orders.

MII Equipment, Inc. is not responsible for loss or damage in transit. It is the responsibility of the receiver (consignee) to inspect for damage and file claims against the carrier. MII Equipment, Inc. will assist the consignee whenever possible in filing freight claims.

Order Change Policy

If a purchase order for unshipped standard or modified product is changed within 7 calendar days after the receipt of the purchase order, there will be no charge. However, if a change is required for an unshipped unit from the eighth calendar day following the receipt of the purchase order, a surcharge will be added. In the event that material unique to the purchase order has been purchased or manufactured, regardless of the time frame, and a change is required that eliminates the need for the purchased or manufactured material, the cost of the material as well as a surcharge will be added to the purchase order. All cancellations of purchase orders may be subject to a cancellation fee depending upon the stage of production. There will be no cancellation fee if notice is received for an unshipped unit prior to the seventh day after receipt of the purchase order. However, if a cancellation is required for an unshipped unit from the eighth calendar day following the receipt of the purchase order, a surcharge will be added. In the event that material unique to the purchase order has been purchased or manufactured, regardless of the time frame, and a cancellation is required that eliminates the need for the purchased or manufactured material, the cost of the material as well as a surcharge will be added to the purchase order. If a cancellation is received on the day of shipment, the MII Equipment, Inc. restocking policy will apply. Cancellation of custom engineered products will result in forfeiture of deposit plus any additional applicable fees.

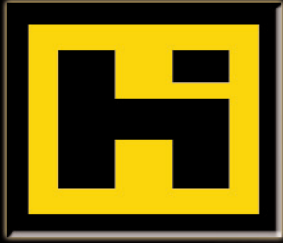
Restocking Policy

The goal of MII Equipment, Inc. is for the customer to be satisfied with their order. With the exception of custom ordered items, merchandise may be returned, but is subject to a minimum 20% restocking fee. Before returning any products, please review the Return Goods Authorization Procedures and contact the customer service staff at MII Equipment, Inc. for instructions.

Return Goods Authorization Policy

MII Equipment, Inc. provides the Return Goods Authorization (RGA) Policy as a courtesy to our distributors in the event that they do not receive what they desired. If a customer wishes to return an MII Equipment, Inc. product, please contact the customer service staff at MII Equipment, Inc. and request an RGA number. This request must be made on or before the fifteenth calendar day following the date of the MII Equipment, Inc. invoice for the merchandise.

The RGA number must appear on the outside of any packaging material for a return to be accepted and processed by MII Equipment, Inc. Customers shipping returns from the Continental US, Canada or Mexico must ensure that the returned product arrives within fourteen days from date of RGA issue for the goods to be accepted at MII Equipment, Inc. Returns from other locations must be shipped within the fourteenth day of RGA issue. All merchandise must arrive FOB at the MII Equipment, Inc. facility or the shipment will be subject to refusal and returned to the sender. All credits are issued less restocking and refurbishing charges, regardless of whether the merchandise was damaged in transit.



HANDLE-IT™

M I I E Q U I P M E N T

Handle-It Limited Warranty Policy

MII Equipment warrants all of its Handle-It products against defects in welded structural frame and, if applicable, scissor legs from faulty material and workmanship for a period of 5 years from the date of invoice.

All batteries are covered under a separate limited warranty from the battery manufacturer for a period of one year from the date of invoice.

All other components have a limited warranty against defects in faulty material and workmanship for a one (1) year period from the date of invoice. Please note that prior authorization from MII Equipment, Inc. is required on all warranty work.

There are no implied warranties of any kind, more specifically; there are no warranties of merchantability or fitness for any particular purpose. The sole warranty of MII Equipment, Inc. shall be as set forth in this limited warranty.

MII Equipment, Inc. will elect to repair or replace a defective component without charge, if any components should become defective within the limited warranty period. Proof of purchase is required for warranty. The charge for shipping the defective component is the responsibility of the buyer and the shipment must be accompanied with an RGA number. The shipping charge to return the component to the buyer is the responsibility of MII Equipment, Inc. This limited warranty does not cover labor expense for removal or reinstallation of components.

This limited warranty shall not cover, among other things, damages resulting from foreign matter or water, failure to provide reasonable and necessary maintenance, and if applicable, use of the product while the charger is plugged into an AC outlet, or failure to follow operating instructions. The limited warranty is not valid for damage resulting from negligence, accident, unreasonable use, abuse or misuse, exceeding rating plate capacities or altering the product without MII Equipment, Inc. written authorization.

MII Equipment, Inc. makes no representation that this product complies with local, state, or federal safety/product standards or codes. Should this product fail to comply in any way with those codes, it shall not be considered a defect of materials or workmanship. MII Equipment, Inc. shall not be held liable for any damages resulting from noncompliance. It is the distributor's responsibility to exercise this limited warranty. This limited warranty is provided to the original purchaser (defined as the original end user) and is not transferable. This constitutes the complete and final statement involving MII Equipment, Inc. and the company's limited warranty obligations for Handle-It brand products.

Distributed by:

MII Equipment, Inc.
1-800-236-1080