

**1997
FMV Compliant**



INTRODUCING

THE

HYBRID™

STRUCTURAL

RACK

SYSTEM

SO INNOVATIVE –

IT MEETS CODE

PREST
RACK

STRUCTURAL RACK SYSTEM

Offers You the Best of Both Worlds

The new Prest Hybrid structural rack system uniquely combines the structural strength of C-Channel Structural Rack and the efficiency of Roll Formed Rack to develop a system so strong and stress free -- it meets the strict AISC Edge-Distance Code -- and it's Patented.

STRENGTH THROUGH EFFICIENCY

The Hybrid System includes structural C-Channel uprights which produce maximum strength and a much-needed ability to withstand the daily torture of lift trucks and material handling equipment.

The Prest Hybrid System also includes unique roll formed step beams which create more capacity with less steel due to its structural design and shape. This 35-40% steel savings reduces material costs, installation costs, and significantly reduces shipping costs.

UNIQUE COMBINATION

The Hybrid System features a patented connector which is formed to fit square or perpendicular to the uprights. This "glove-tight" fit produces a stress-free connection that uniformly distributes the load, is structurally superior and is a safer connection.

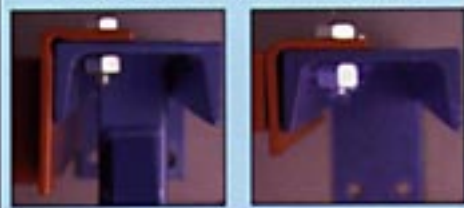
Furthermore, the square or perpendicular interface maintains critical vertical tolerances needed for today's narrow-aisle turret trucks, lift trucks and material handling equipment.

In fact, the Prest Hybrid System maintained an incredible 1/8" vertical tolerance over the 40' tall uprights in the Quality King installation which includes 2,662 uprights and 41,824 beams.

Quality Throughout

- The Hybrid System meets or exceeds national codes and is one of only a few systems to satisfy the strict AISC [I.16.5] Minimum Edge Distance code. This specification also mirrors the U.B.C and A.I.S.I. codes.
- No alignment problems means a faster, more accurate installation. Other systems must use a "drift pin" to draw beams, uprights and connectors in place to insert locking bolts.
- All Hybrid rack systems are designed for 100% utilization.
- Efficient Beam Section offers 1 1/2" step for decking or bar grate to create a smooth loading surface and maintain maximum overall storage height.
- Baked-on powder epoxy finish is a tough but smooth finish. Impact and corrosion resistant, the Hybrid offers the most durable finish available in a choice of 12 colors.
- The Hybrid System offers 2" adjustability.
- Hybrid System carries a 5-Year Warranty and is covered by Prest's "Security Blanket Program."

Prest's Patented Connector Meets Code and Balances the Load



Prest Hybrid Connectors are precision-formed and fit square to the surface of the uprights.

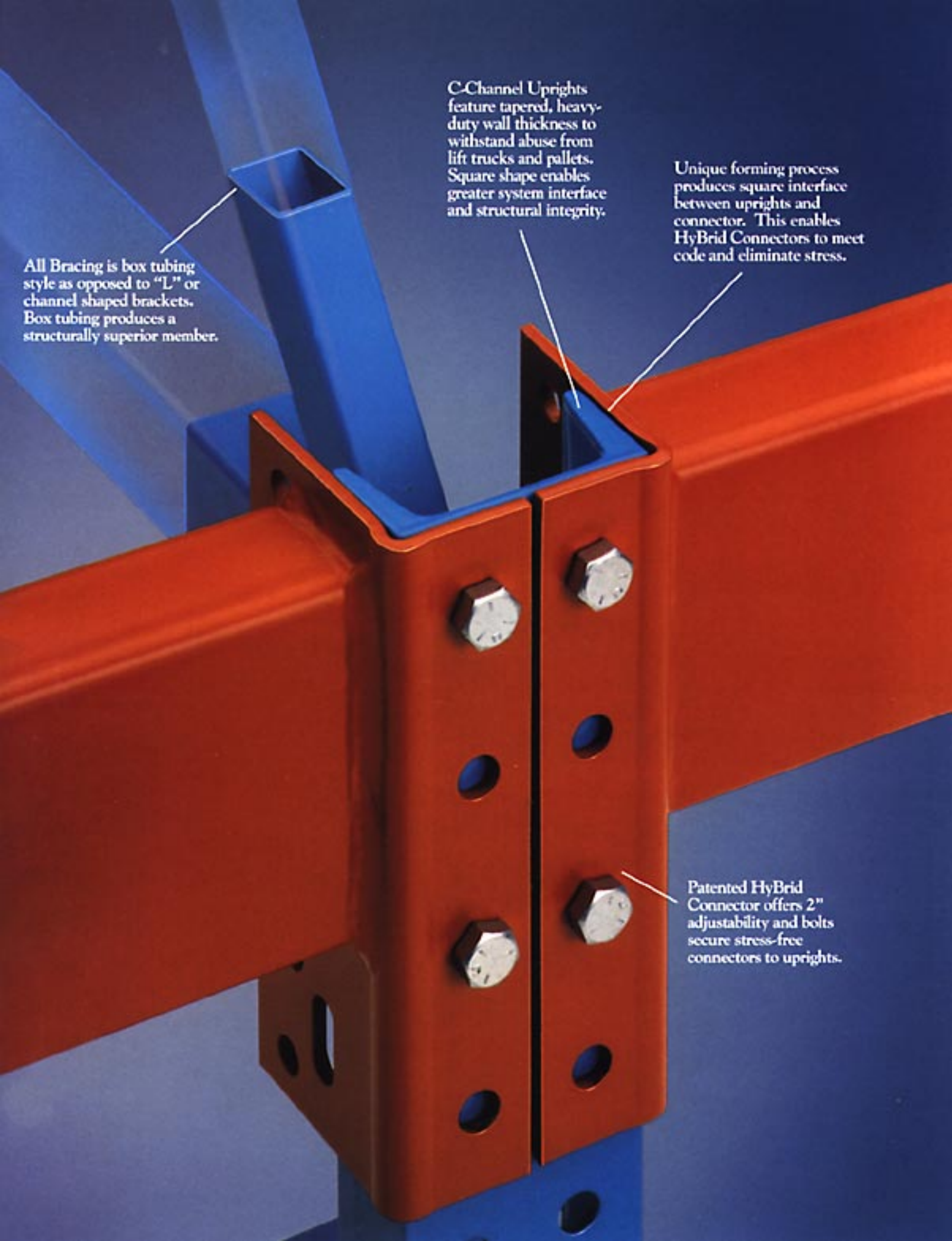
This enables a precise fit and the amount of metal from the edge of the hole to the edge of the connector is equal-to-or-greater-than the diameter of the hole itself. A Grade 5 bolt securely fastens the two surfaces for a flush, "stress-free" fit. This edge-distance code compliance eliminates tear-out problems due to stress.

Conventional systems have radiused corner connectors which, when fastened to the uprights, must be drawn into place with a 1/2" bolt. This method shifts all the force or stress to the front of the connector where the tear-out problem exists. Because of the radius and the 1/2" bolt combination, these applications do not meet the Minimum Edge Distance codes and are typically harder to align, install and must be frequently inspected for looseness and material cracks.



Hybrid System installation at Quality King Company, Long Island, New York.

Roll Formed Beams are structurally strong, feature an integral step for decking and are totally enclosed for clean applications as in food warehouses.



All Bracing is box tubing style as opposed to "L" or channel shaped brackets. Box tubing produces a structurally superior member.

C-Channel Uprights feature tapered, heavy-duty wall thickness to withstand abuse from lift trucks and pallets. Square shape enables greater system interface and structural integrity.

Unique forming process produces square interface between uprights and connector. This enables Hybrid Connectors to meet code and eliminate stress.

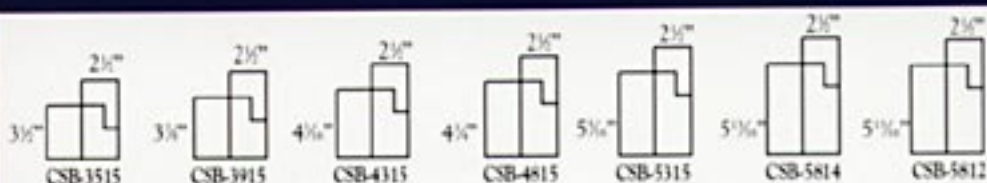
Patented Hybrid Connector offers 2" adjustability and bolts secure stress-free connectors to uprights.

Upright Capacity Chart



FIRST BEAM LEVEL	CUF 335 C3 X 3.5#	CUF 341 C3 X 4.1#	CUF 454 C4 X 5.4#
32"	40,890#	46,515#	49,850#
36"	40,890#	46,515#	49,850#
40"	40,890#	46,515#	49,850#
44"	40,890#	46,515#	49,850#
48"	40,810#	45,044#	49,850#
52"	39,080#	43,016#	49,850#
56"	37,230#	40,900#	49,850#
60"	35,315#	38,690#	49,850#
64"	33,315#	36,387#	49,850#
68"	31,230#	33,990#	49,850#
72"	29,065#	31,490#	49,850#
76"	26,275#	28,890#	49,850#
80"	23,976#	26,192#	49,850#
84"	21,707#	23,699#	48,180#
88"	19,734#	21,545#	45,640#
92"	18,019#	19,673#	43,020#
96"	16,518#	18,034#	40,320#
100"	15,197#	16,592#	37,530#
104"	14,029#	15,316#	34,699#
108"	12,990#	14,182#	32,130#
112"	12,062#	13,169#	29,836#
116"	11,231#	12,261#	27,779#
120"	10,482#	11,444#	25,927#
124"	9,806#	10,706#	24,255#
128"	9,193#	10,037#	22,740#
132"	8,636#	9,429#	21,362#
136"	8,128#	8,874#	20,105#
140"	7,664#	8,367#	18,957#
144"	7,238#	7,903#	17,904#

Consult Your Local Prest Rack Dealer For Seismic Ratings



Beam Capacity Chart

LENGTH	SEISMIC ZONE	SB-1515	SB-1915	SB-4315	SB-4815	SB-5315	SB-5814	SB-5812
54"	ZONE 04	8,610	9,927	11,041	12,584	14,818	18,674	19,000
	WEIGHT/E.A.	15.1	15.9	16.6	17.6	18.6	21.1	28.2
90"	ZONE 04	5,232	6,467	7,109	8,006	9,323	11,619	15,462
	WEIGHT/E.A.	22.5	23.9	25.1	26.7	28.4	32.5	44.4
92"	ZONE 04	5,038	6,348	6,979	7,856	9,143	11,388	15,149
	WEIGHT/E.A.	22.9	24.3	25.6	27.2	29.0	33.2	45.3
96"	ZONE 04	4,685	5,890	6,735	7,573	8,806	10,956	14,562
	WEIGHT/E.A.	23.8	25.2	26.5	28.2	30.0	34.4	47.1
108"	ZONE 04	3,838	4,795	5,772	6,848	7,941	9,850	13,062
	WEIGHT/E.A.	26.2	27.8	29.4	31.3	33.3	38.2	52.5
120"	ZONE 04	3,219	3,996	4,792	5,888	7,246	8,962	11,859
	WEIGHT/E.A.	28.7	30.5	32.2	34.3	36.6	42.1	57.9
132"	ZONE 04	2,751	3,392	4,055	4,966	6,173	8,104	10,300
	WEIGHT/E.A.	31.2	33.2	35.0	37.3	39.9	45.9	63.3
144"	ZONE 04	2,387	2,924	3,485	4,254	5,273	6,898	8,746
	WEIGHT/E.A.	33.7	35.8	37.9	40.4	43.1	49.7	68.7

STANDARD COLORS: BLUE UPRIGHTS AND ORANGE BEAMS. TWELVE ADDITIONAL COLORS AVAILABLE WITH COLOR MATCH AVAILABLE UPON REQUEST.

PREST RACK

Prest Rack, Inc.
500 Inbrook Lane, P.O. Box 96
Brookings, South Dakota 57006

605-697-2600
Fax 605-697-2626

MHI RMI MHEBA

Copyright 1994, Prest Rack, Inc.
Printed in U.S.A.
Form HB-494